



Manual

Factusol Connector - Prestashop 1.6 / 1.7

PROFESSIONAL VERSION

v.5



Content

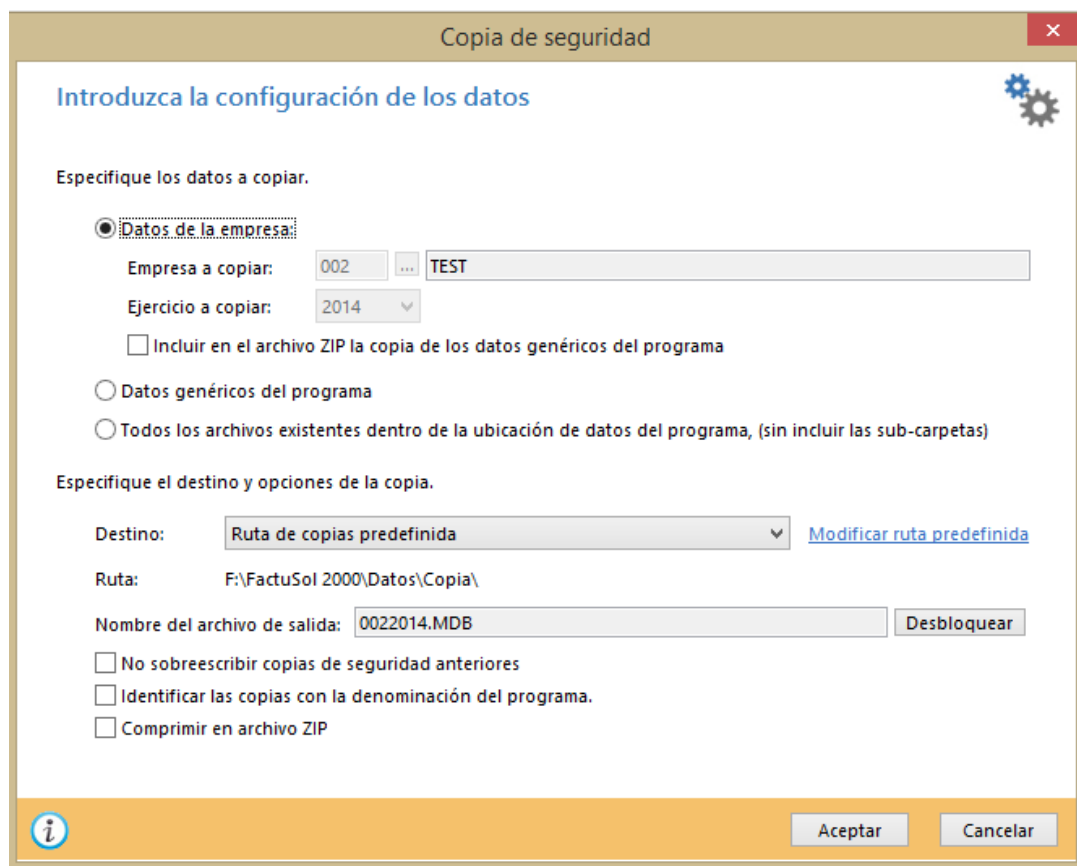
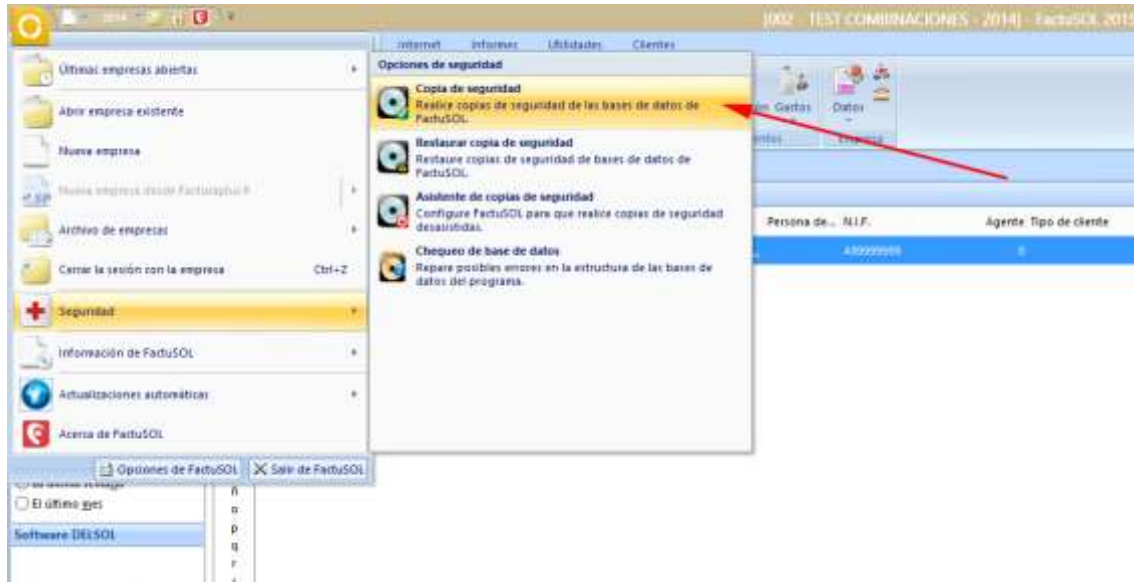
1. Preliminary considerations	4
1.1. Backup	4
1.2. Internet enabled tab (Factusol 2016 or above)	4
1.3. Factusol differences Factusol 2016 and 2017	5
1.4. References in products	6
1.5. Products with combinations in Prestashop	6
1.6. Products with sizes and colors in Factusol	6
1.7. Restrictions catalog Factusol	6
1.8. Disable billing Prestashop	7
2. Installing the module	8
3. Configurations	9
3.1. Export Settings customers and orders	9
3.1.1. Configure forms of payment	12
3.2. Settings for importing categories, products, prices and stocks	14
3.2.1. Set up multiple fares	15
3.3. Factusol configurations	15
3.3.1. Internet Web configuration Factusol	15
3.3.2. Allow up sections, families, items and customers	20
4. Export customers / orders	22
4.1. Customers and backlogs download	22
4.1.1. Delete files customers / orders pending download	23
4.2. Manual order file generation	23
4.3. manual generation of customer files	23
4.4. Download customers / orders from Factusol	23
5. Export Catalog	24
5.1. XLS files generation	25
5.2. Preparation of XLS files to be imported	26
5.2.1. Create the ZIP file	26
5.2.2. Download the ZIP file	26
5.2.3. Decompressing the ZIP file	26
5.2.4. Open and save all XLS files again	27
5.3. Import XLS files in Factusol	28
5.4. Check imports	32
6. Import Catalog	33

6.1. Synchronize prices / stocks of existing products	33
6.2. Import new categories and products	37
6.2.1. Importing CSV files generated	37
Example: Imported	41
7. Import bills.....	43
7.1. Automatic file import bill.....	43
7.2. Manual import bill.....	43
7.3. List of imported invoices.....	44
7.4. Invoice management tab order	45
7.5. Download invoice by customer.....	45
8. ANNEX I: Avoid duplicate customer accounts Factusol.....	48
9. ANNEX II: Fast mode	49

1. Preliminary considerations

1.1. Backup

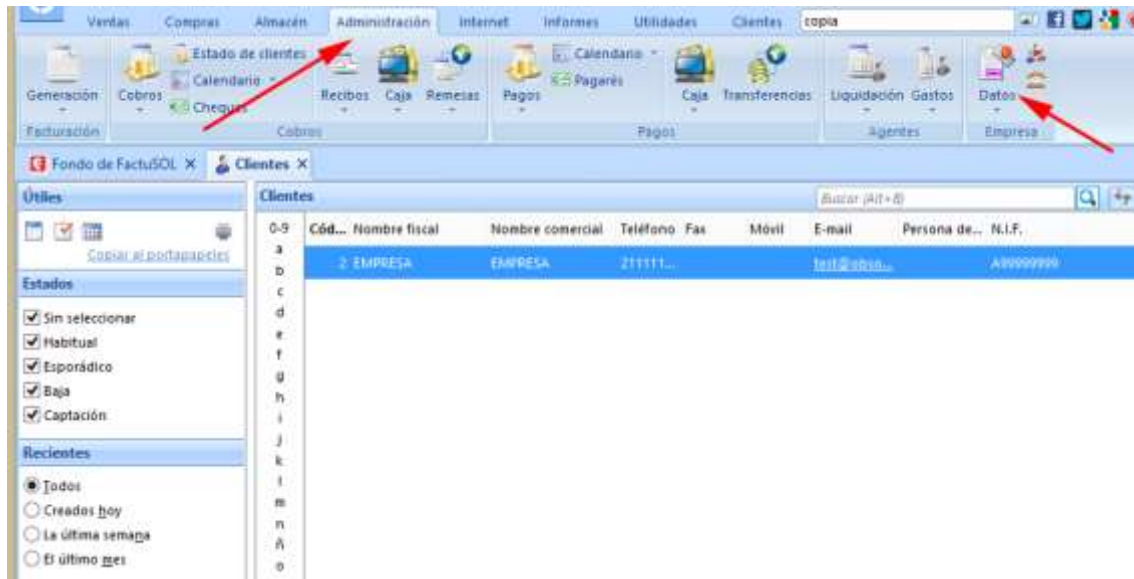
It is important that before any operation you back up your database Factusol. To do this we open the window Factusol, and from the menu select 'Security' - 'Backup' and follow the steps to create a copy of our database company used.



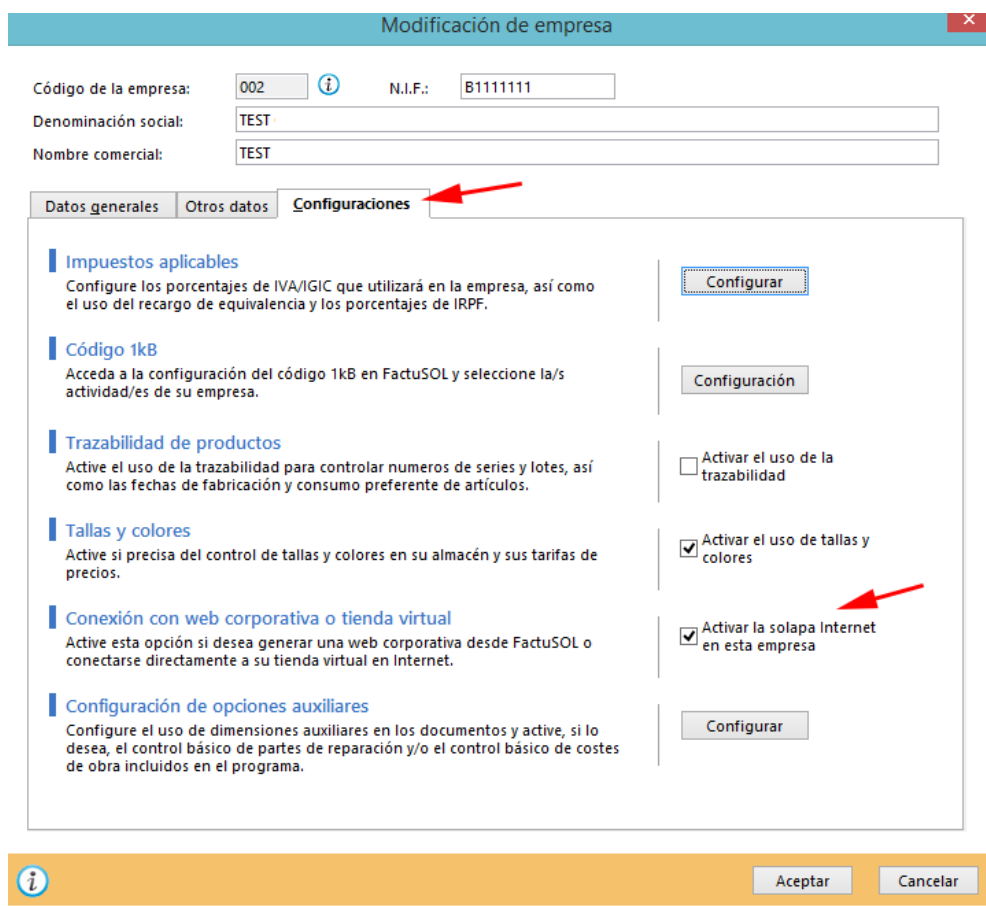
1.2. Internet enabled tab (Factusol 2016 or above)

If you have activated the 'Internet' tab in your Factusol, you must follow the following steps to activate it:

Access the 'Administration' tab and click on the 'Data' button:

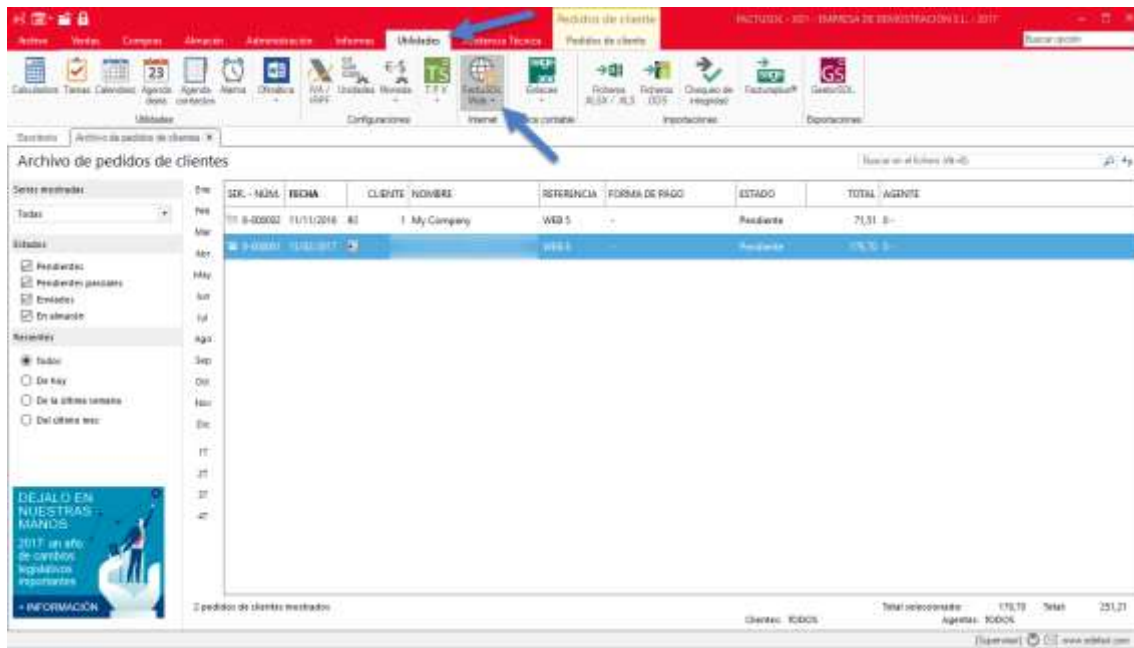


In the next window, access the 'Settings' tab and check the box 'Enable Internet tab in this company' and accept:



1.3. Factusol differences Factusol 2016 and 2017

From Factusol 2017, and the DELSOL 360 program, the Internet tab is compressed inside the 'Utilities' option - 'Factusol Web':



However, the options are exactly the same as described in this manual replacing the 'Internet' by 'Utilities' tab - 'Factusol Web'.

1.4. References in products

For the module to work correctly every product of your shop should have informed the field 'Reference' with a unique value and a maximum of 13 characters (limit Factusol).

1.5. Products with combinations in Prestashop

Although this module supports product combinations in Prestashop should consider the following limitations:

- 1) When stocks update prices and product combinations it is necessary that the product price 'father' of the combination has a value of 0 € since the module will introduce the total price of the combination.
 - a. Example: If we have a product 'T' with 2 combinations 'Blue' and 'Red' with prices 12 € and 13 € respectively, in prestashop we have a price of 0 € on the product 'T', 12 € in the 'Impact price' for the combination 'Blue' and 13 € on the 'Impact of price' for the combination 'Red'.
- 2) If you want to export a catalog of Prestashop to Factusol with combinations of product it is necessary for each combination has its own unique reference because the module will create a separate product for each combination when generating the XLS file for Factusol. In Factusol have a separate product for each combination while Prestashop will combinations. Product 'father' will not be downloaded to FatuSOL.

1.6. Products with sizes and colors in Factusol

This module is not compatible with sizes and colors in Factusol

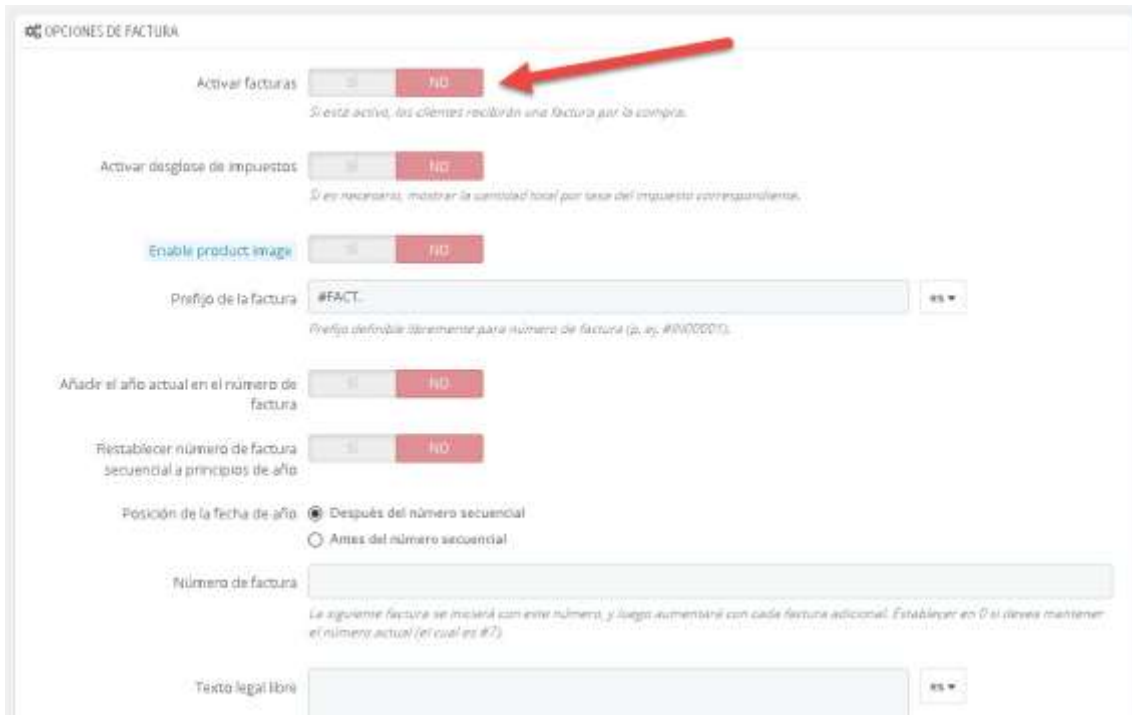
1.7. Restrictions catalog Factusol

Factusol add to the catalog information in your export file is necessary that the following conditions are met:

1. All products export / update must have a family
2. All families should have a section
3. All sections, and product families should have the option of allowing hop on internet enabled (see apartado - 3.3.2)

1.8. Disable billing Prestashop

Since the bills will no longer generate Prestashop Factusol but we must disable billing Prestashop from the back office of the store. We can clear it from the 'Orders> Invoices' menu on the 'Billing Options' section.



The screenshot shows the 'OPCIONES DE FACTURA' (Billing Options) configuration page in Prestashop. The page contains several settings for invoice management. A red arrow points to the 'Activar facturas' (Activate invoices) toggle switch, which is currently set to 'NO'. Below this, there are other settings like 'Activar desglose de impuestos' (Activate tax breakdown), 'Enable product image', 'Prefijo de la factura' (Invoice prefix), 'Añadir el año actual en el número de factura' (Add the current year to the invoice number), 'Restablecer número de factura secuencial a principios de año' (Reset sequential invoice number at the beginning of the year), 'Posición de la fecha de año' (Year date position), 'Número de factura' (Invoice number), and 'Texto legal libre' (Free legal text).

OPCIONES DE FACTURA

Activar facturas ☐ SI ☒ NO *Si está activo, los clientes recibirán una factura por la compra.*

Activar desglose de impuestos ☐ SI ☒ NO *Si es necesario, mostrar la cantidad total por tasa del impuesto correspondiente.*

Enable product image ☐ SI ☒ NO

Prefijo de la factura *Prefijo de cuatro dígitos para número de factura (p. ej. #INV0001).*

Añadir el año actual en el número de factura ☐ SI ☒ NO

Restablecer número de factura secuencial a principios de año ☐ SI ☒ NO

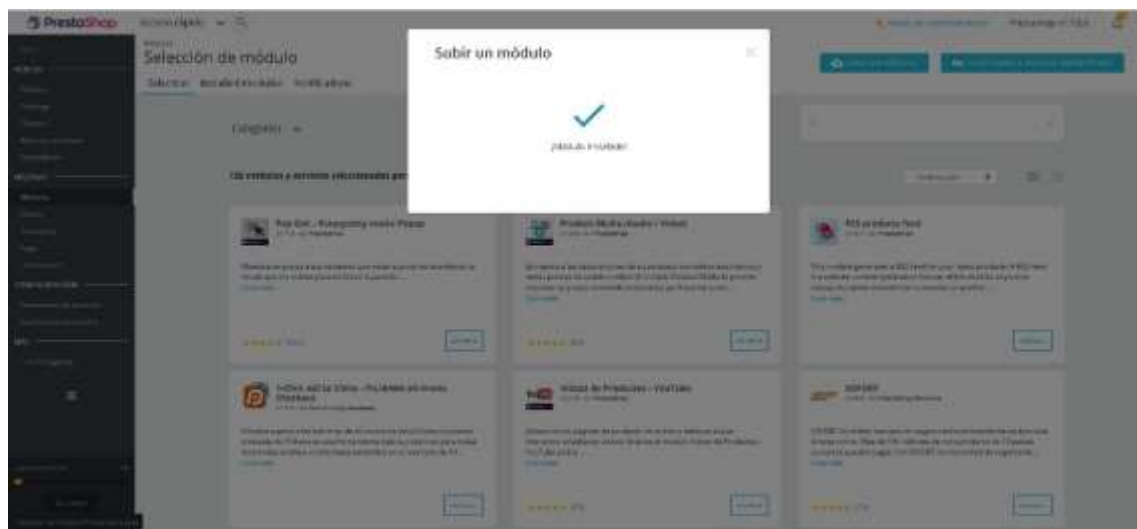
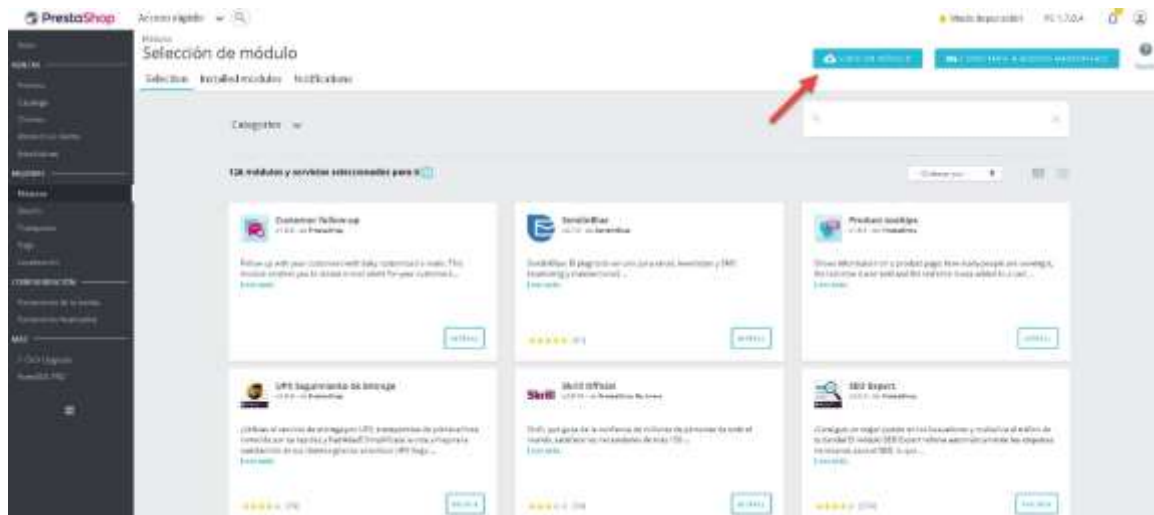
Posición de la fecha de año ☒ Después del número secuencial ☐ Antes del número secuencial

Número de factura *La siguiente factura se iniciará con este número, y luego aumentará con cada factura adicional. Establecer en 0 si desea mantener el número actual (el cual es #7).*

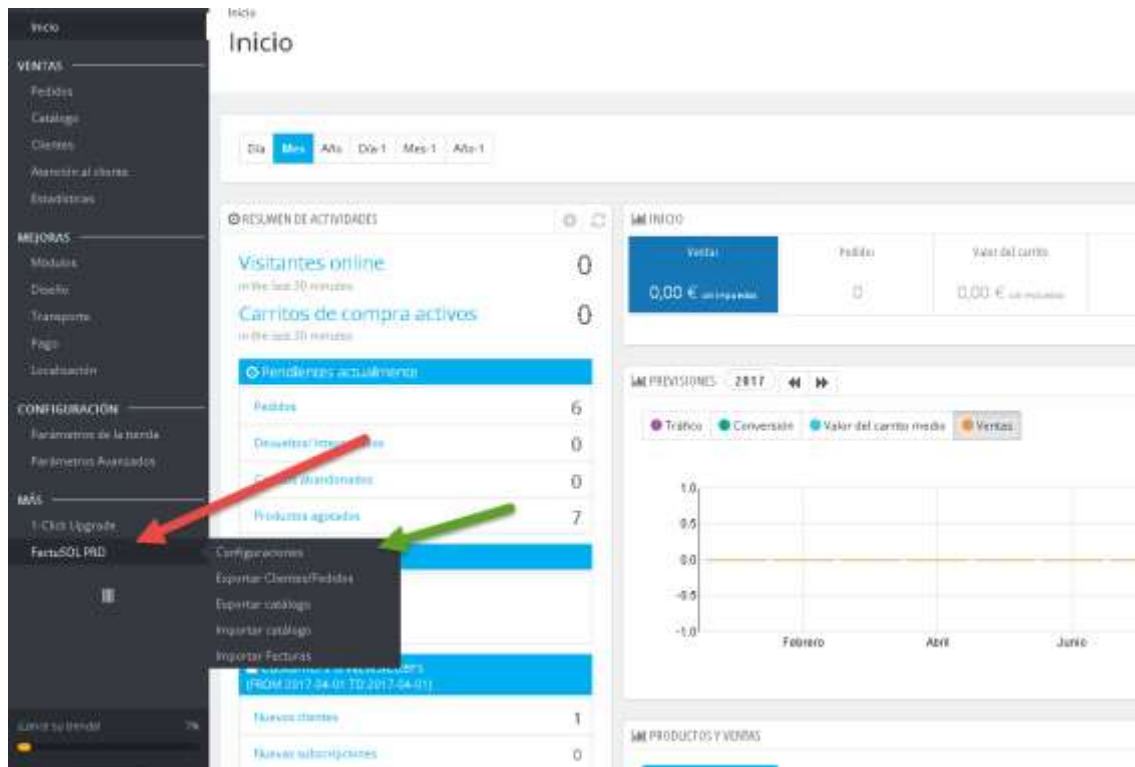
Texto legal libre

2. Installing the module

To install the module should be directed to the 'Modules> Modules and Services' tab of your Back-Office Prestashop and select 'Upload a module'. It will open a window where you select the ZIP file you downloaded to buy this product and once selected must click 'Upload this module'.



Once installed back to the beginning of our back-office and you should see a new tab 'Factusol PRO' that includes 5 submenus: Settings, Export Customers / Orders, Catalog Export, Import catalog, Import Invoices.



3. Configurations

By accessing the settings menu we see 2 forms, one to configure the export of customers and orders and another to set the import parameters.

If you have activated invoices Prestashop a message will appear at the top warning him.



3.1. Export Settings customers and orders

In this form you can configure all settings for export customers and orders from Prestashop to Factusol.

CONFIGURACIÓN PARA EXPORTACIÓN DE CLIENTES Y PEDIDOS

Número serie: 8

Iniciar ID pedidos a partir de: 5000

Iniciar ID clientes a partir de: 6000

Incluir gastos de envío: ☒ SI ☐ NO

IVA Estandar: 21.000

IVA Reducido: 10.000

IVA Superreducido: 4.000

ID en FactusOL para pago "ps_checkpayment": 1

ID en FactusOL para pago "ps_wirepayment": 2

Guardar opciones

Configuration parameters:

- **Serial number:** Select the serial number set to Factusol for Internet customer orders. It is important to match the serial number on the module configured and Factusol, here you can see configurable field on both platforms:

In Factusol 2016:

2014 - 1002 - TEST COMBINACIONES - 2014 - FactusOL 2015 - [Fondo de FactusOL]

Internet

Configuración

Configuración de Módulos Web

Activar la posibilidad de recibir pedidos de clientes

Número de serie para pedidos de clientes por internet: 8

Descargar los pedidos de clientes On Line: ☐ Sí ☒ No

Enviar e-mail de confirmación de recepción de datos

Texto para el e-mail de confirmación:

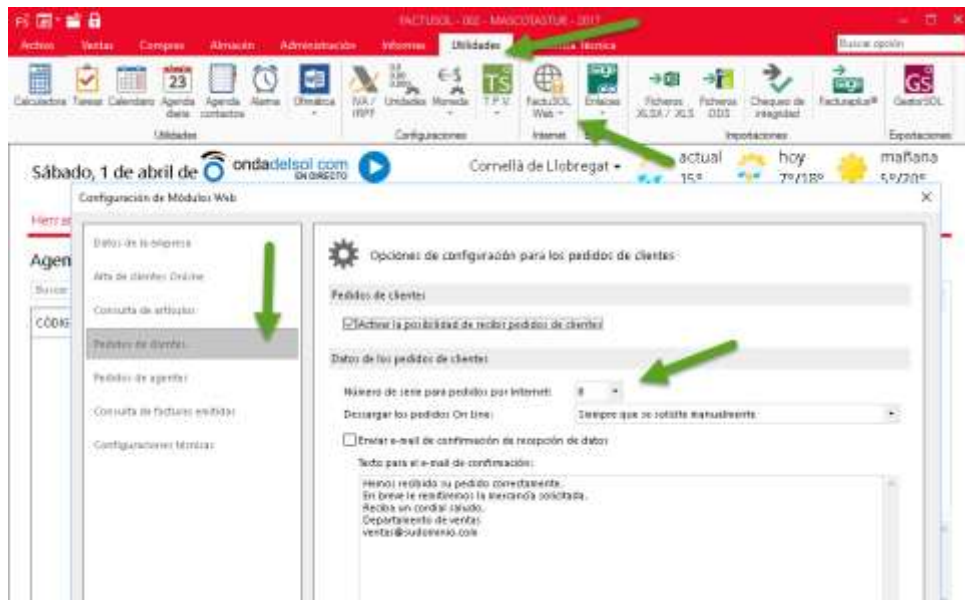
Ver video Lo Esencial de FactusOL

1002 - TEST COMBINACIONES - 2014 - FactusOL 2015 - [Fondo de FactusOL]

Número de serie

Aceptar Cancelar

In Factusol 2017 / DELSOL 360:

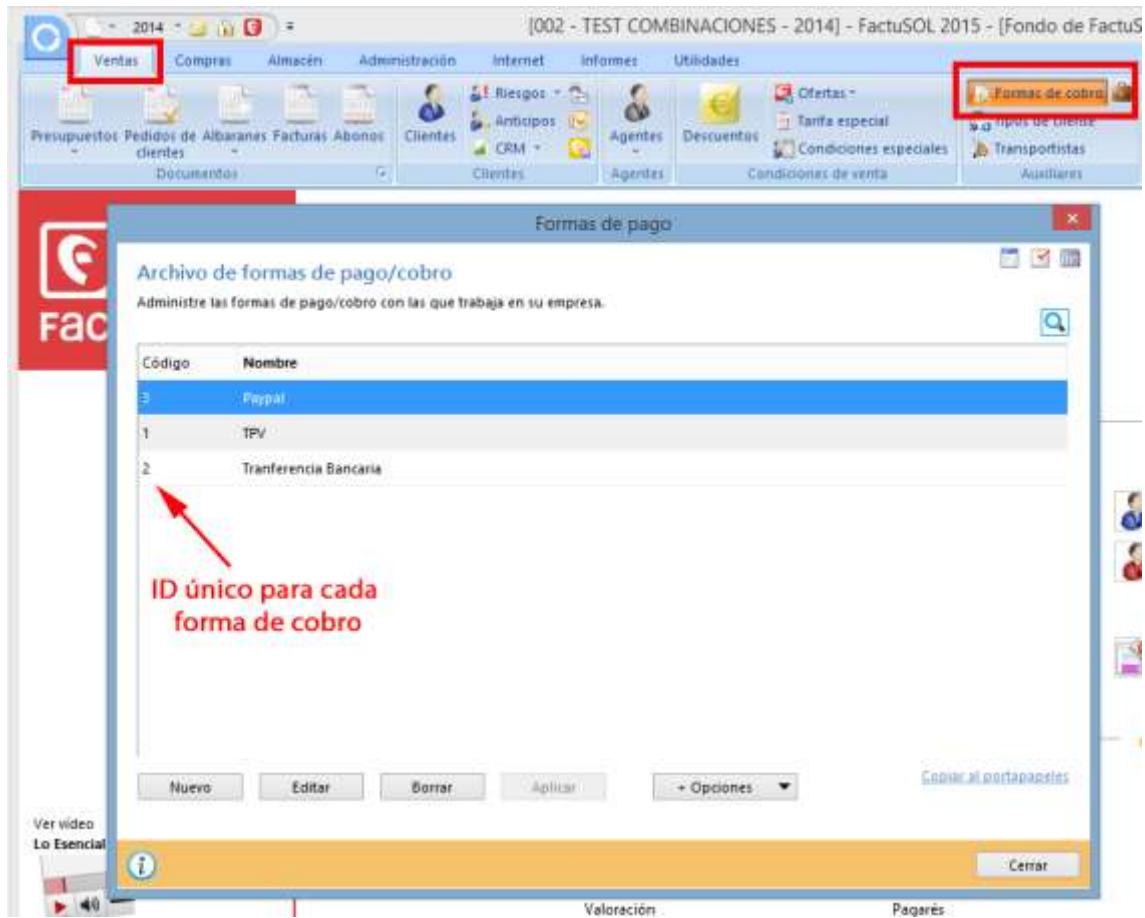


- **Start ID requests from:** Id order from which you want to begin imported to Factusol orders.
- **ID customers start from:** Customer ID from which you want to start Factusol imported customers.
- **Shipping include:** Enable this option to include shipping orders exported. Shipping costs will be included as a concept more in the order as Factusol, for now, does not allow editing field 'Portes' from the online download from an external store.
- **IVAs settings:** You must select each of the ivas used in your store.
- **ID in Factusol for payment 'X':** You can relate active forms of payment in the store with collection forms configured in Factusol entering the ID of the form Factusol collection for each of them. (See next section 3.1.1).

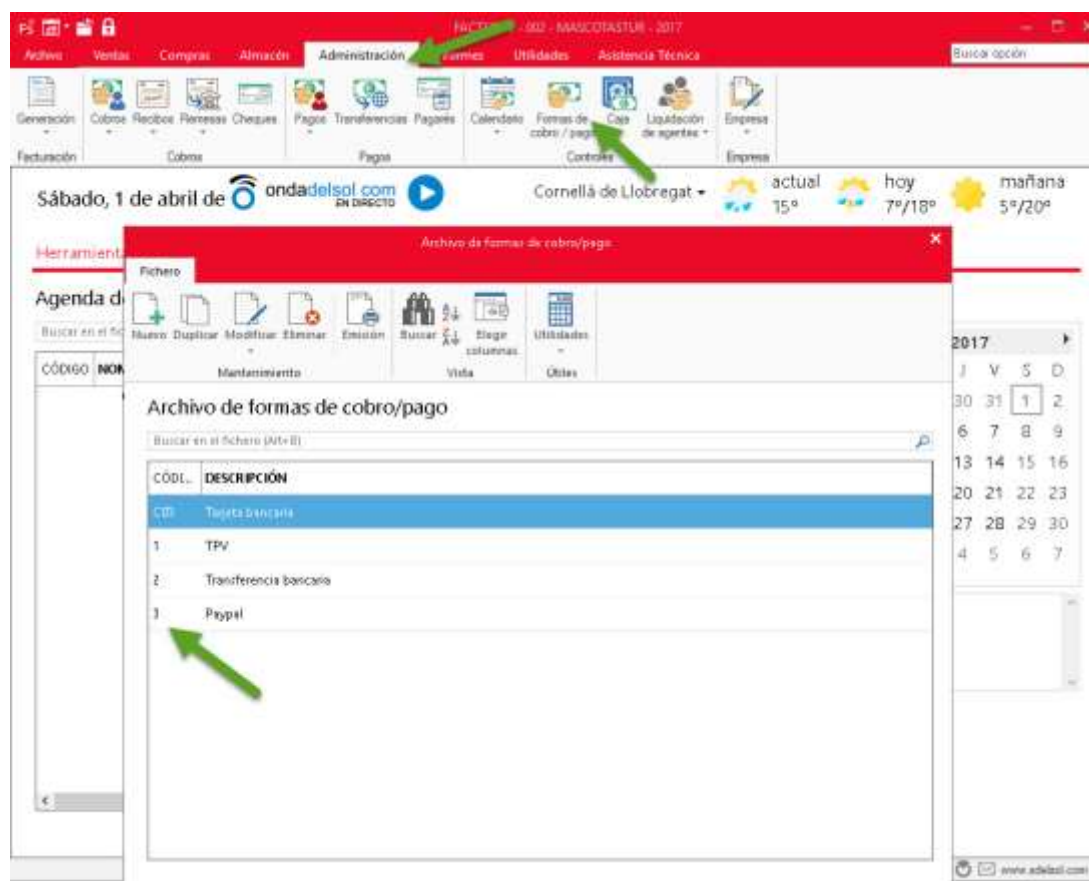
3.1.1. Configure forms of payment

In order to relate the forms of payment in Prestashop and Factusol it is necessary to associate modules with Prestashop payment IDs collection forms configured in Factusol:

In Factusol 2016:



In Factusol 2017 / DELSOL 360:



In Prestashop:

IVA Estándar:	21.000
IVA Reducido:	10.000
IVA Superreducido:	4.000

ID en FactuSOL para pago 'bankwire': 2

ID en FactuSOL para pago 'ceca': 1

ID en FactuSOL para pago 'paypal': 3

ID en FactuSOL para pago 'obsredsys': 1

ID correspondiente a cada módulo de forma de cobro

3.2. Settings for importing categories, products, prices and stocks

[illegible]

Settings:

- **Current Prices:** Determines whether or not the amounts imported products.
- **STOCKS update:** Determines whether or not imported stocks of products.
- **Factusol prices with VAT included:** Enable this option if you already have included in the retail price of its products in Factusol VAT.
- **Generate CSV import:** Enable this option if you want to import categories and new products created in Factusol to PrestaShop.
- **Standard VAT:** You must select the tax rule your Prestashop corresponding to VAT Standard.
- **Reduced VAT:** You must select the tax rule your Prestashop for the reduced VAT rate.
- **Super-reduced VAT:** Rule must select your Prestashop taxes for the super-reduced VAT.
- **Group Standard VAT:** You must select the tax rule group your Prestashop corresponding to VAT Standard.
- **Group Reduced VAT:** You must select the tax rule group your Prestashop for the reduced VAT rate.
- **Group Super-reduced VAT:** Rule group must select your Prestashop taxes for the super-reduced VAT.
- **Main rate:** ID main rate Factusol containing prices (normally the value is "1").
- **multirate:** In case you wish to import more than one rate consult the following section (3.2.1 - multirate)
- **Sync URL:** Sync URL to be set in the Factusol to synchronize data (see section 3.3 - Settings in Factusol).
- **Fast Mode:** (Optional) This new mode writes directly to database without going through the library Prestashop which allows update prices and stocks up to 50 times faster than normal. However, you should note that this mode can not obtain additional product information and updated combinations. More information on the 'Annex II - Quick Mode' section

3.2.1. Set up multiple fares

To import more than one rate you must first create a 'Customer Group' in our store Prestashop so that associate each rate to a group of customers.

If you have not created any client group module will invite us to do this in 'multirate' form field configuration import (see previous section 3.2).

Multitarifa: Para poder importar una tarifa adicional antes debe crear "Grupo de clientes" para cada tarifa

Once the groups are created, the module will show the groups available in our store to assign an ID Factusol fare. We indicate the ID of each import tariff Factusol or leave the field empty if you do not want to import a fee to a client group.

IVA Estandar: ES Standard rate (21%)

IVA Reducido: ES Reduced Rate (10%)

IVA Superreducido: ES Super Reduced Rate (4%)

Tarifa principal: 1
(Obligatorio)

Id tarifa para "Grupo Tarifa 2": 2
(Opcional) Sólo para multitarifa

Id tarifa para "Grupo tarifa 3": 6
(Opcional) Sólo para multitarifa

URL sincronización: http://localhost:1700.com/es/module/obsfactusolproFactuSync?token=ApQDMkUkLWUxLP=8R5yWEH9

Guardar opciones de importación

Fees associated with a customer group will be created as a 'specific price' within each product (or product mix).

Precios específicos 3

+ Añade un precio específico

REGLA	COMBINACIÓN	DIVISA	PAÍS	GRUPO	CLIENTE	PRECIO FIJO	IMPACTO	PERIODO	DESDE	
—	Todas las combinaciones	Todas las divisas	Todos los países	Grupo Tarifa 2	Todos los clientes	19,17 €	—	ilimitado	1	
—	Todas las combinaciones	Todas las divisas	Todos los países	Grupo tarifa 3	Todos los clientes	16,50 €	—	ilimitado	1	

3.3. Factusol configurations

3.3.1. Internet Web configuration Factusol

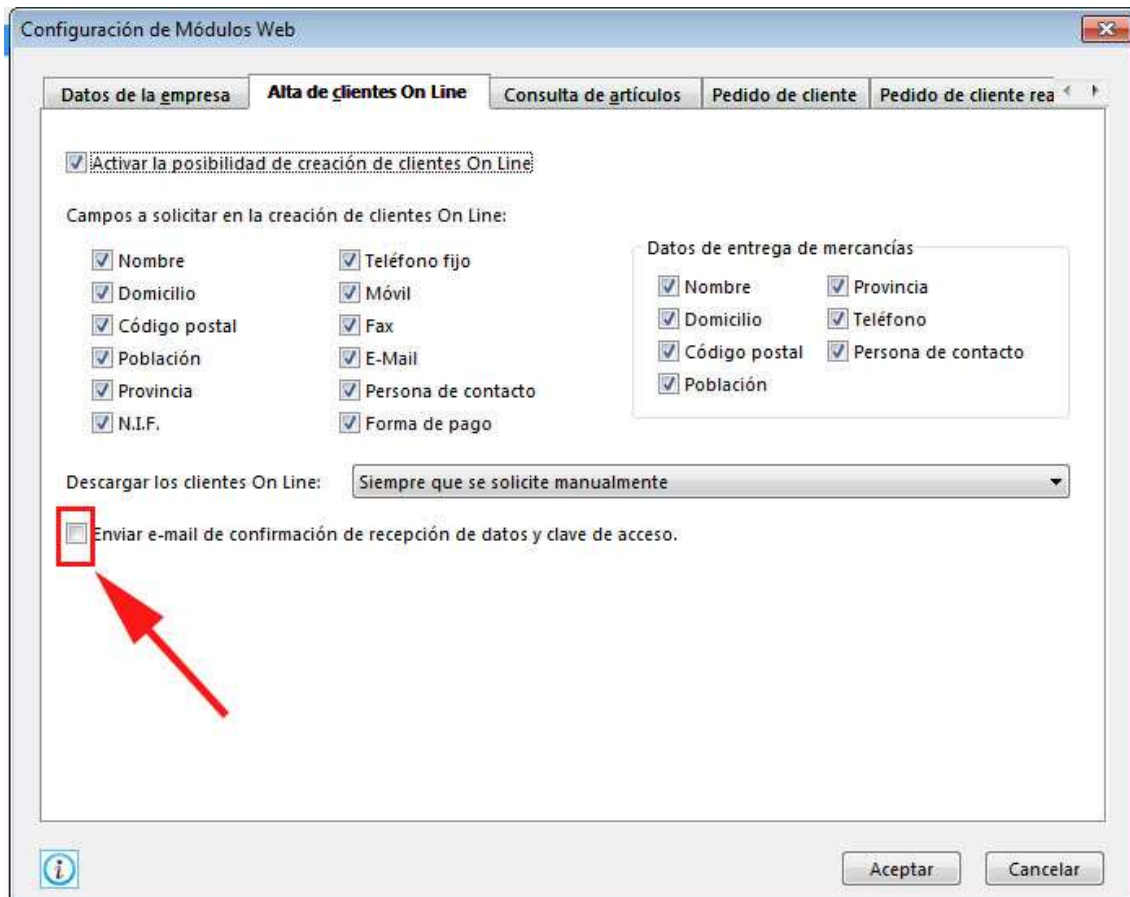
In 2016 or earlier Factusol

- We must access the Internet tab> Settings

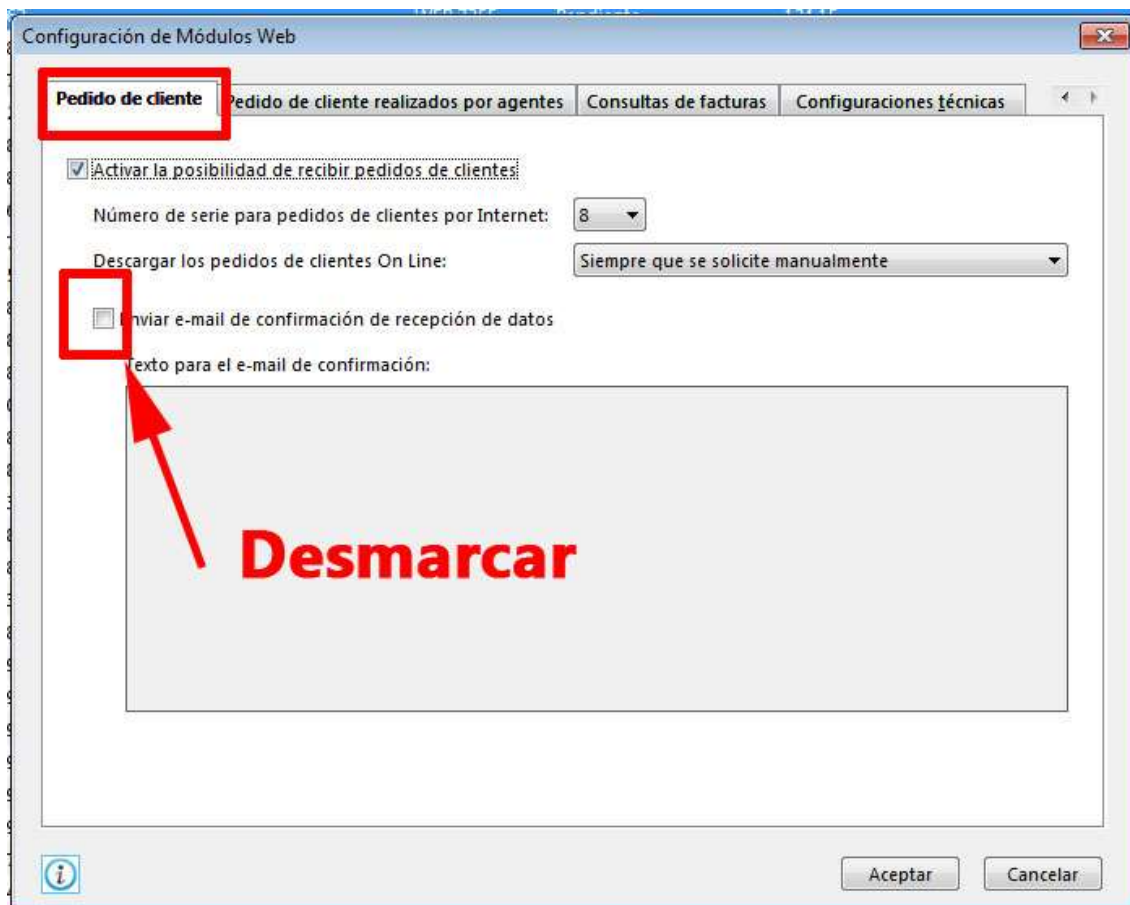
In Factusol 2017 or higher

- We should access the Utilities tab> Factusol Web> Settings

In the window that appears, you must select the 'Alta online customers' tab and uncheck the 'Send e-mail confirmation of receipt of data and password' option:



Then select the tab 'Sales Order' and uncheck the 'Send e-mail confirmation of receipt of data' option:



The serial number for online customer orders default is 8.

The next tab to configure is 'queries bills', we must activate the option 'Enable the possibility that customers consult their bills':

Configuración de Módulos Web

Pedido de cliente | Pedido de cliente realizados por agentes | **Consultas de facturas** | Configuraciones técnicas

☒ Activar la posibilidad de que los clientes consulten sus facturas

Campos a mostrar en las líneas de facturas:

Campo 1:	Número de línea de detalle
Campo 2:	Código del artículo
Campo 3:	Des. del artículo / Concepto
Campo 4:	Cantidad
Campo 5:	No mostrar
Campo 6:	Precio Unidad
Campo 7:	% de IVA
Campo 8:	No mostrar
Campo 9:	No mostrar
Campo 10:	Subtotal
Campo 11:	Total de línea
Campo 12:	No mostrar

Aceptar Cancelar

Finally, we reach the 'Technical Settings' tab and enter the data from our FTP:

Configuración de Módulos Web

Pedido de cliente Pedido de cliente realizados por agentes Consultas de facturas Configuraciones técnicas

Dirección del servidor FTP: ftp.servidor.es Puerto: 21

Nombre del usuario FTP: usuario_ftp

Contraseña del usuario FTP: contrasena_ftp [Ocultar caracteres](#)

Protocolo: FTP - Protocolo de transferencia de archivos

Modo de transferencia: Pasivo

Carpeta de subida para el archivo de texto ASCII: RUTA_TIENDA/modules/obsfactusolpro/import/

Ruta de página de activación de actualización: URL de sincronización

Carpeta de ejecución del proyecto: RUTA_TIENDA/modules/obsfactusolpro/

Subcarpeta de imágenes de artículos: images/

Subcarpeta de pedidos de clientes validados: orders/

Subcarpeta de clientes creados On Line: customers/

Ruta de página de administración:

Aceptar Cancelar

You must correctly enter the following data:

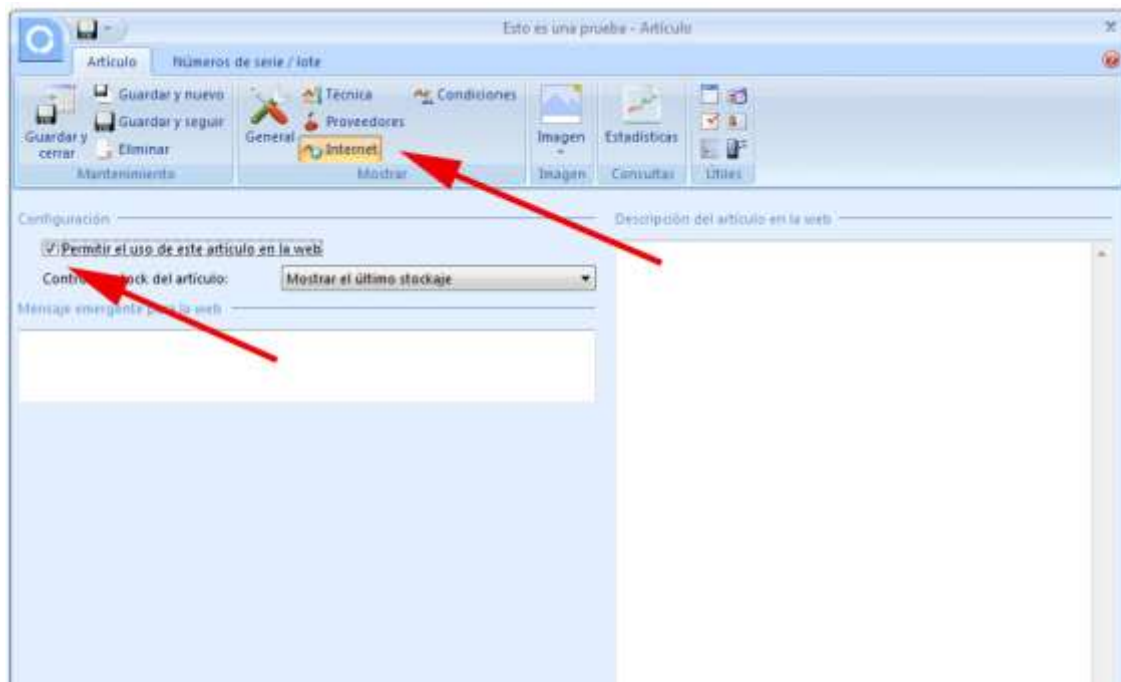
- **FTP server address:** FTP address where your store is installed.
- **Port:** FTP port (default 21).
- **FTP user name:** User code used to access your FTP store.
- **FTP user password:** User password with access to the code of your FTP store.
- **Protocol:** The connection protocol that uses FTP.
- **Upload folder for ASCII text file:** We must put the URL of the FTP where the root of PrestaShop store and add '/ modules / obsfactusolpro / import /'.
- **Page Path upgrade activation:** Sync must enter the URL informed in the module configuration (see section 3.2 - Settings for the import of categories, products, prices and stocks).
- **Folder of the project:** Here you enter the path to your shop and then add the path of the 'modules / obsfactusolpro /' module.
- **Subcarpeta customer orders validated:** You must enter 'orders /'.
- **Subcarpeta customer orders validated:** You must enter 'customers /'.

- **Subfolder of images of items:** You must indicate 'images /'. This field is required if you want to import new products from Factusol to PrestaShop having associated product image.

Once the setup is completed must accept the changes.

3.3.2. Allow up sections, families, items and customers

Factusol to add the information to file export shop activate the item for use on the web. Each item (section, family, article or customer) has a tab to activate Internet use on the web.



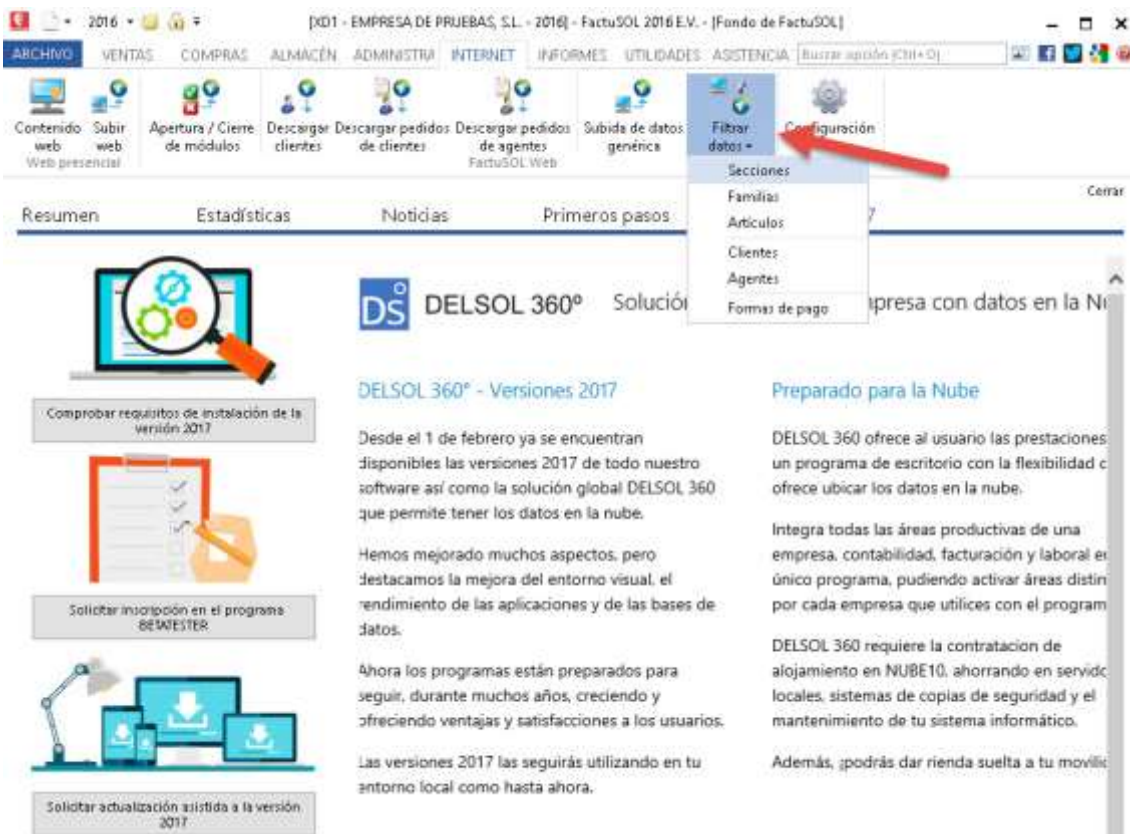
Factusol enable this option also allows massively from the following path:

Factusol 2016 or earlier:

- Tab: Internet> Filter Data

Factusol 2017 or higher:

- Tab Utilities> Factusol Web> Filter Data



For each item (sections, families, items and customers) we can filter a range that we want to activate. By default the (empty - ZZZ) range includes all items.

Filtrado de datos para Internet

Selecione las condiciones para el filtrado

Especifique el rango de intervalos.

Primera sección a filtrar:

Última sección a filtrar:

ZZZ

Acción a realizar:

Activar la subida a internet de las secciones seleccionad

Aceptar

Cancelar

21

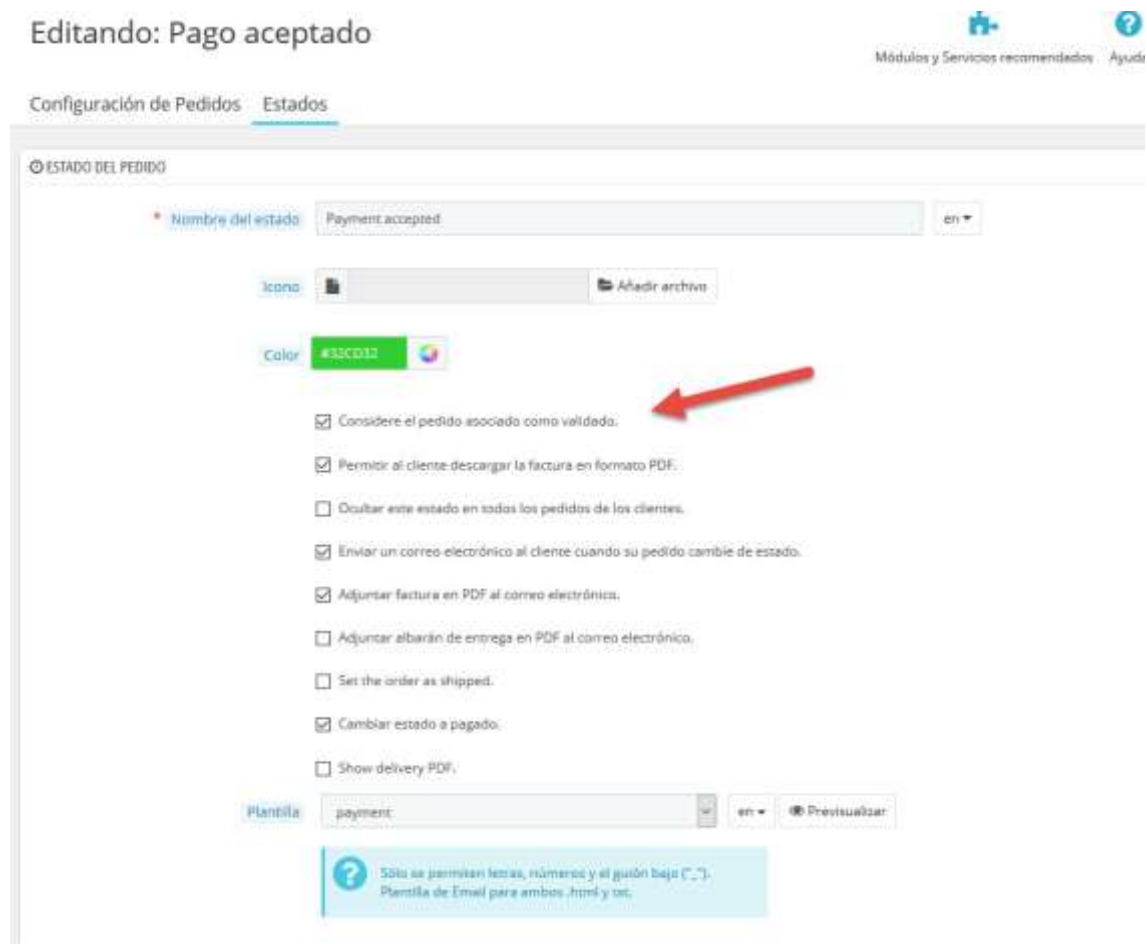
4. Export customers / orders

4.1. Customers and backlogs download

On top of this menu we will find information on orders and outstanding customer download. The module will automatically generate these files when you place a new order at the store.



NOTE: The module will create download files when the order passes through a state 'order validated', ie a state of order that has enabled Prestashop check 'Consider the associated order as validated'. An example of validated state is 'Payment accepted'.



4.1.1. Delete files customers / orders pending download

We may remove all customer files and / or pending orders downloaded from the trash icon that accompanies each section.



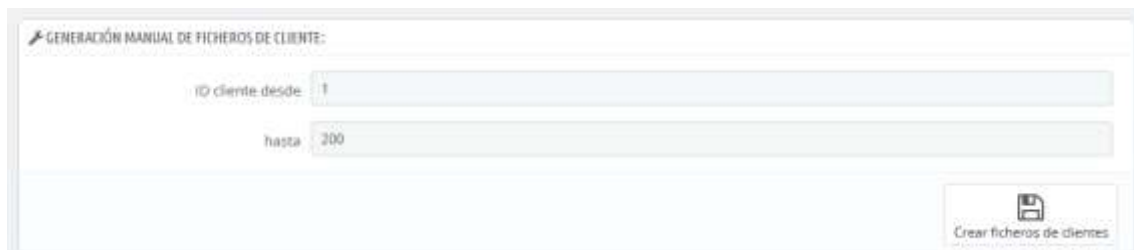
4.2. Manual order file generation

Although the files are generated automatically when an order is placed in the store, we can also manually generate order files we want from this section indicating an order ID from / to.



4.3. manual generation of customer files

We can also manually generate client files from this section indicating a customer ID from / to.

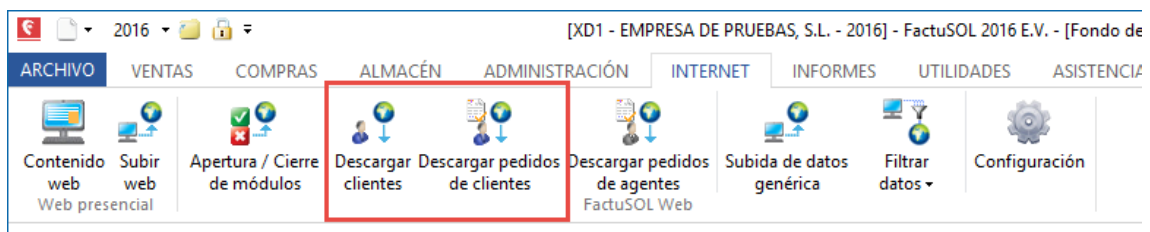


4.4. Download customers / orders from Factusol

When the module indicates that we have customer files and / or download backorders we can proceed with the download Factusol to do so, follow these steps.

In Factusol 2016 or earlier:

- Access: Internet> Download client / customer orders Download



In Factusol 2017 or later:

- Access Utilities> Factusol Web> Download client / customer orders Download



Important: We recommend not download more than 200-300 customers / orders at once, because usually Factusol problems downloading large amounts of files. If you have many customers / orders to download, try to do in batches of 200.

5. Export Catalog

From the menu 'Export Catalog' module we can generate XLS files to import Factusol from a simple form.

This module allows you to export the entire catalog of products Prestashop to Factusol. You can export the following data:

- Products (or combinations of products)
- Stock
- Prices
- Categories
- providers

You should consider the following limitations:

1. **Products and combinations:** All products and combinations should have its reference code, otherwise that product or combination will not be exported.
2. **combinations:** If your store has combination products the final sale price must consist entirely in the combination, therefore the parent product should have a price of 0.00 €.
3. **combinations:** The combinations are generated as independent products Factusol, however, will be properly linked with each combination of Pretashop.
4. **Categories:** Due to the limitation of only the categories Factusol 'default' associated with each product and not the entire category tree is exported.
5. **Requires Microsoft Office Excel**

5.1. XLS files generation

ARCHIVOS XLS PARA EXPORTAR PRODUCTOS DE PRESTASHOP A FACTUSOL (COMPRIMIDOS)

Código almacén: GEN

Código tarifa: 1

Stock mínimo: 2

Stock máximo: 10

Idioma: English (English)

ID Producto desde: 1

hasta: 1000

Ficheros de exportación: Fichero de exportación generado en fecha 30/03/2017 13:54:01 [Descargar](#)

[Crear ficheros XLS de exportación](#)

Form fields:

- **stock code:** It refers to the code set in your Factusol store (default, general store: GEN)
- **Rate Code:** Refers to the code rate your Factusol that each product will be applied (by default, 1)
- **Minimum stock:** minimum stock to be configured on each product (required to later purchase ordering massive providers)
- **Stock up:** minimum stock to be configured on each product (required to later purchase ordering massive providers)
- **Language texts:** Select the language you want to export texts for product names, descriptions ...
- **Export files:** Link to download the XLS files generated. For convenience will be compressed in ZIP format.
- **Create XLS export files:** Button to execute the creation of export files.

5.2. Preparation of XLS files to be imported

5.2.1. Create the ZIP file

To create the ZIP file must push the button 'Create XLS files export'.

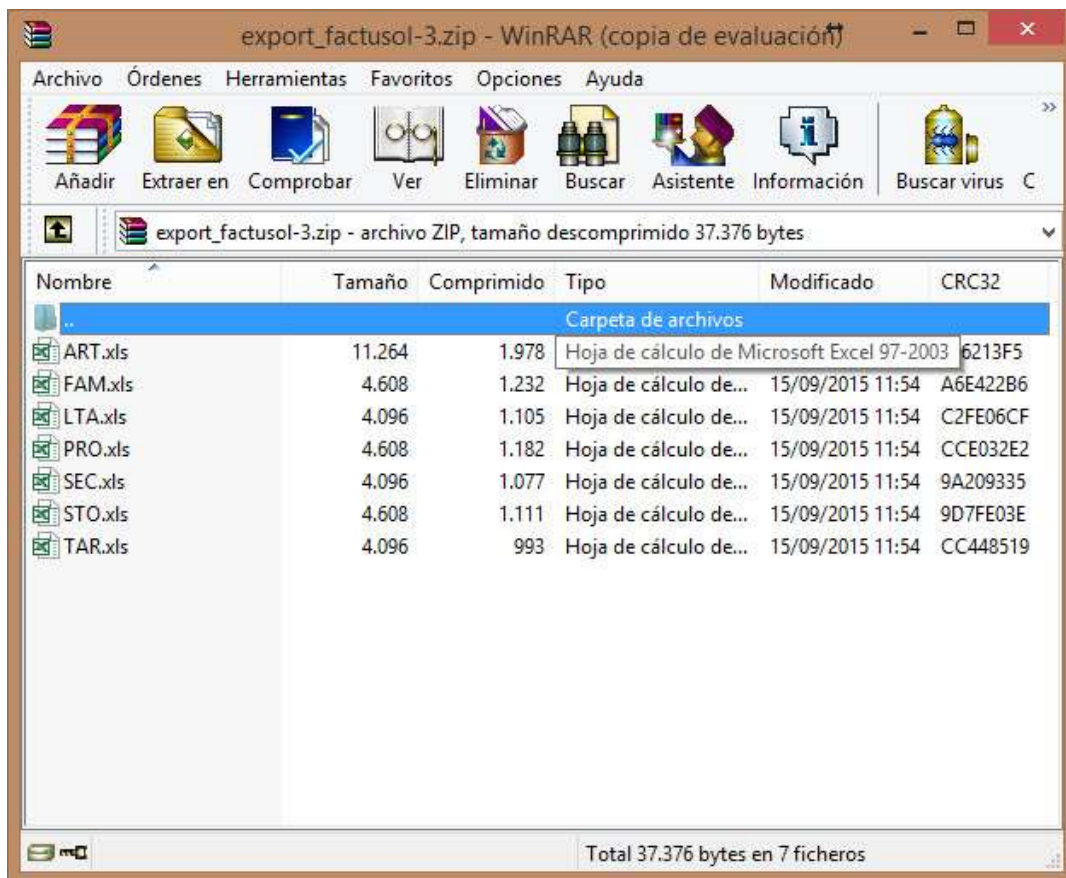
5.2.2. Download the ZIP file

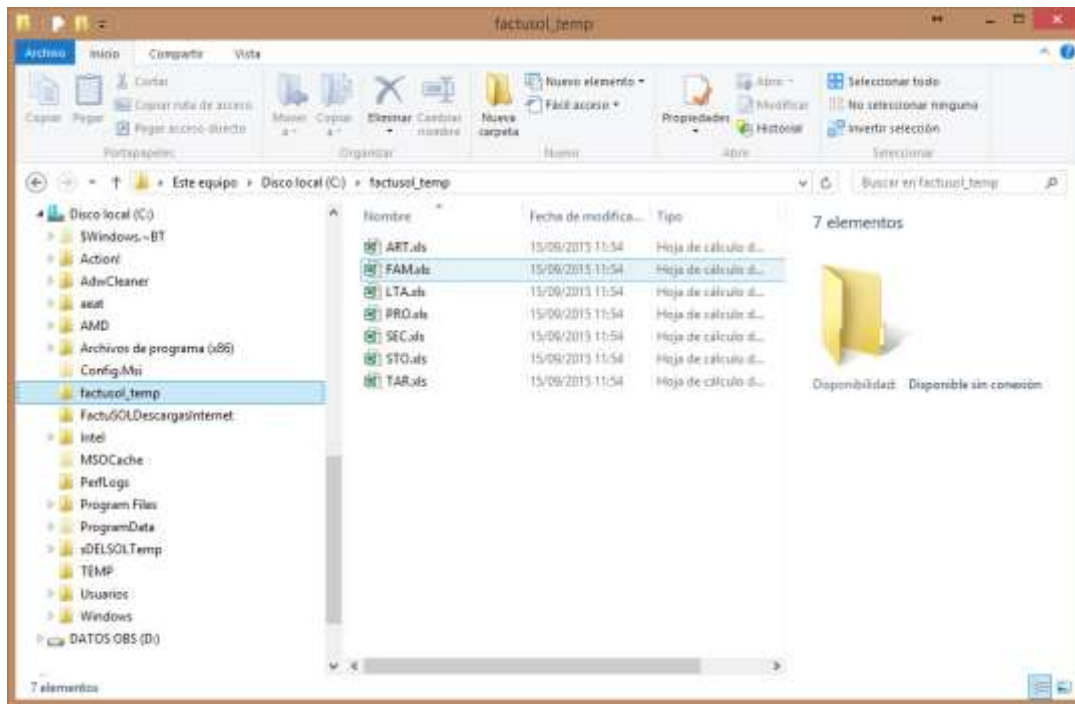
Once generated the ZIP file containing the import files Factusol must click on 'Download' to download it and save it to a temporary folder, eg C: \ factusol_temp.



5.2.3. Decompressing the ZIP file

We decompress the contents of the zip file, we can do it in same temporary folder created above C: \ factusol_temp.

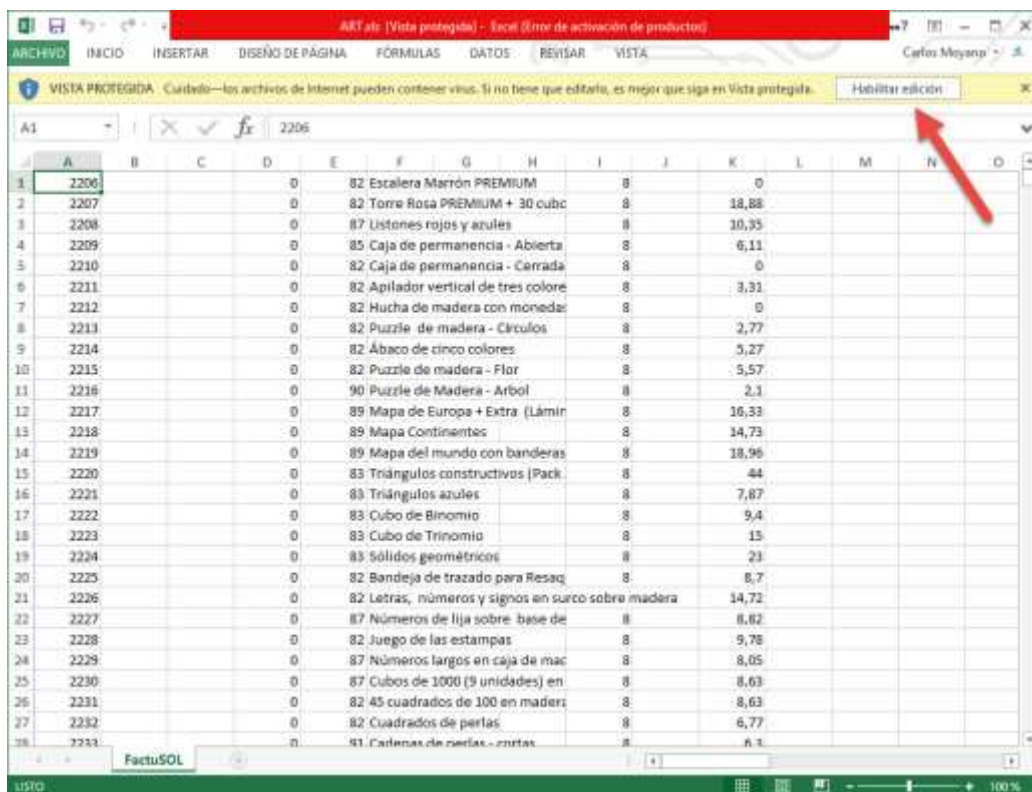


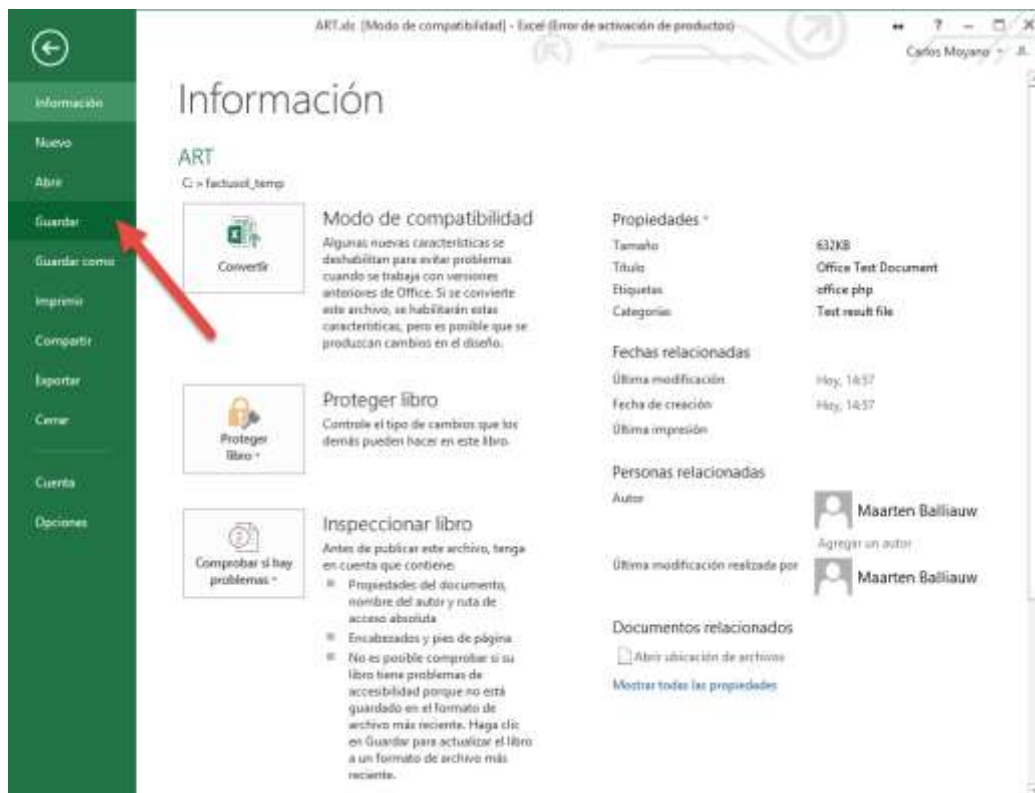


5.2.4. Open and save all XLS files again

This step is very important to correctly detect Factusol XLS files

We must open and resave 7 XLS files with our Excel program to do this we must enable editing after opening the file in Excel and save it.



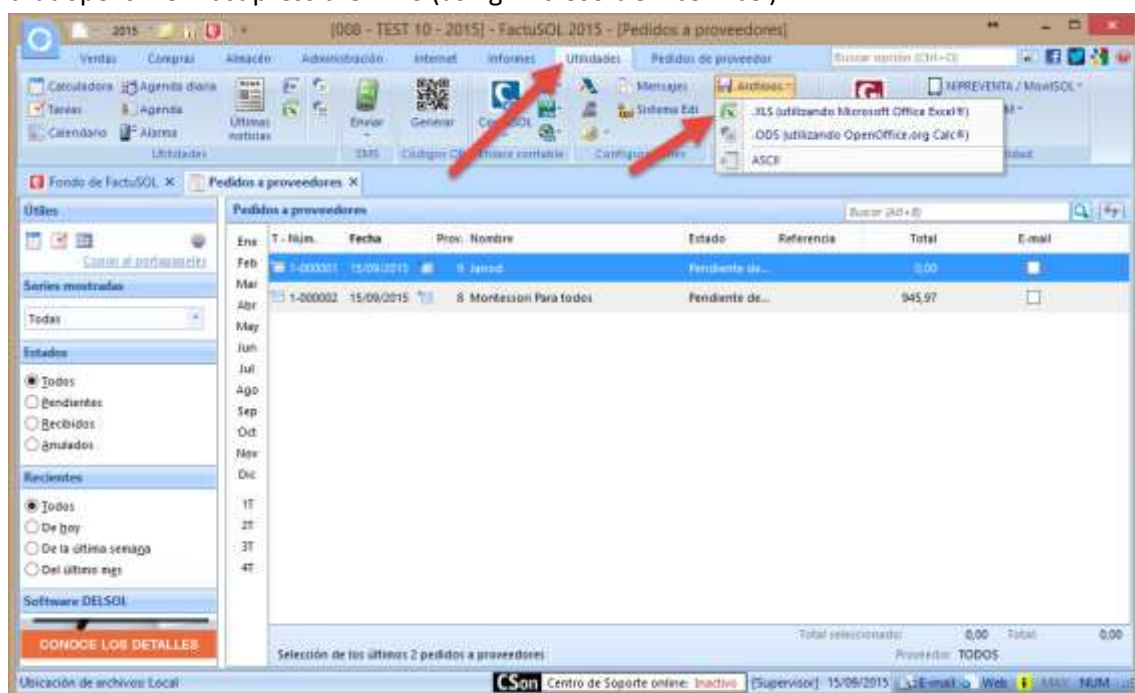


This step we must do it for all XLS files in the folder.

5.3. Import XLS files in Factusol

To import the data to Factusol Factusol and we will open our company that we have created for our catalog.

Once opened will access the 'Utilities' tab and will press the 'Files' button. In the context menu that opens we must press the '.XLS (using Microsoft Office Excel)'.



a sale where we can make importing files will open.

Importar datos desde ficheros .xls utilizando Microsoft Office Excel®

Seleccione el origen y los datos a importar

Especifique el directorio del origen de los datos.

Ubicación:

Especifique las opciones y los ficheros a importar.

☒ Comprobar la estructura de todos los ficheros seleccionados antes de la importación.
☐ Chequeo de registros duplicados (proceso más lento).

Compras	Almacenes	Administración
<input type="checkbox"/> Pedidos a proveedores	<input type="checkbox"/> Secciones	<input type="checkbox"/> Recibos
<input type="checkbox"/> Entradas	<input type="checkbox"/> Familias	<input type="checkbox"/> Cobros de albaranes
<input type="checkbox"/> Facturas recibidas	<input type="checkbox"/> Artículos	<input type="checkbox"/> Cobros de facturas
<input type="checkbox"/> Proveedores	<input type="checkbox"/> Almacenes	<input type="checkbox"/> Cobros de recibos
<input type="checkbox"/> Representantes	<input type="checkbox"/> Stock	<input type="checkbox"/> Pagos de facturas recibidas
Ventas	<input type="checkbox"/> Crear consolidación de inventario	
<input type="checkbox"/> Presupuestos	Fecha de consolidación: <input type="text" value="15/09/2015"/>	
<input type="checkbox"/> Pedidos de clientes	<input type="checkbox"/> Compuestos	
<input type="checkbox"/> Albaranes	<input type="checkbox"/> Traspasos	
<input type="checkbox"/> Facturas	<input type="checkbox"/> Fabricaciones	
<input type="checkbox"/> Clientes	<input type="checkbox"/> Tarifa de precios	
<input type="checkbox"/> Actividades	<input type="checkbox"/> Descuentos	
<input type="checkbox"/> Agentes	<input type="checkbox"/> Unidades de medida	
<input type="checkbox"/> Formas de pago / cobros		

[F1] para buscar directorio

[Descargar documentación técnica sobre la importación](#)

Required fields:

- Location: We select the folder where the XLS files to import, in our example C: \ factusol_temp

To import the files is **very important** follow this order:

- 1) First select the part of Almacenes: Stock and Price list

Importar datos desde ficheros .xls utilizando Microsoft Office Excel®

Seleccione el origen y los datos a importar

Especifique el directorio del origen de los datos.

Ubicación: c:\

Especifique las opciones y los ficheros a importar.

☒ Comprobar la estructura de todos los ficheros seleccionados antes de la importación.
☐ Chequeo de registros duplicados (proceso más lento).

Compras	Almacenes	Administración
<input type="checkbox"/> Pedidos a proveedores	<input type="checkbox"/> Secciones	<input type="checkbox"/> Recibos
<input type="checkbox"/> Entradas	<input type="checkbox"/> Familias	<input type="checkbox"/> Cobros de albaranes
<input type="checkbox"/> Facturas recibidas	<input type="checkbox"/> Artículos	<input type="checkbox"/> Cobros de facturas
<input type="checkbox"/> Proveedores	<input type="checkbox"/> Almacenes	<input type="checkbox"/> Cobros de recibos
<input type="checkbox"/> Representantes	<input checked="" type="checkbox"/> Stock	<input type="checkbox"/> Pagos de facturas recibidas
	<input type="checkbox"/> Crear consolidación de inventario	
	Fecha de consolidación: 15/09/2015	
	<input type="checkbox"/> Compuestos	
	<input type="checkbox"/> Traspasos	
	<input type="checkbox"/> Fabricaciones	
	<input checked="" type="checkbox"/> Tarifa de precios	
	<input type="checkbox"/> Descuentos	
	<input type="checkbox"/> Unidades de medida	

Ventas

☐ Presupuestos

☐ Pedidos de clientes

☐ Albaranes

☐ Facturas

☐ Clientes

☐ Actividades

☐ Agentes

☐ Formas de pago / cobros

[Descargar documentación técnica sobre la importación](#)

Marcar todos Desmarcar todos Comprobar ficheros Aceptar Cancelar

And will press the 'OK' to start the import button Stock and prices.

- 2) Second, uncheck the 2 options above and select Part Purchasing: Suppliers and Almacenes part: Sections, Families and articles.

Importar datos desde ficheros .xls utilizando Microsoft Office Excel®

Seleccione el origen y los datos a importar

Especifique el directorio del origen de los datos.

Ubicación:

Especifique las opciones y los ficheros a importar.

☒ Comprobar la estructura de todos los ficheros seleccionados antes de la importación.
☐ Chequeo de registros duplicados (proceso más lento).

Compras	Almacenes	Administración
<input type="checkbox"/> Pedidos a proveedores	<input checked="" type="checkbox"/> Secciones	<input type="checkbox"/> Recibos
<input type="checkbox"/> Entradas	<input checked="" type="checkbox"/> Familias	<input type="checkbox"/> Cobros de albaranes
<input type="checkbox"/> Facturas recibidas	<input checked="" type="checkbox"/> Artículos	<input type="checkbox"/> Cobros de facturas
<input checked="" type="checkbox"/> Proveedores	<input type="checkbox"/> Almacenes	<input type="checkbox"/> Cobros de recibos
<input type="checkbox"/> Representantes	<input type="checkbox"/> Stock	<input type="checkbox"/> Pagos de facturas recibidas
	<input type="checkbox"/> Crear consolidación de inventario	
	Fecha de consolidación: <input type="text" value="15/09/2015"/>	
Ventas	<input type="checkbox"/> Compuestos	
<input type="checkbox"/> Presupuestos	<input type="checkbox"/> Traspasos	
<input type="checkbox"/> Pedidos de clientes	<input type="checkbox"/> Fabricaciones	
<input type="checkbox"/> Albaranes	<input type="checkbox"/> Tarifa de precios	
<input type="checkbox"/> Facturas	<input type="checkbox"/> Descuentos	
<input type="checkbox"/> Clientes	<input type="checkbox"/> Unidades de medida	
<input type="checkbox"/> Actividades		
<input type="checkbox"/> Agentes		
<input type="checkbox"/> Formas de pago / cobros		

[Descargar documentación técnica sobre la importación](#)

And will press the 'OK' button to start importing Suppliers, articles and families.

5.4. Check imports

Once imported data must review all be imported.

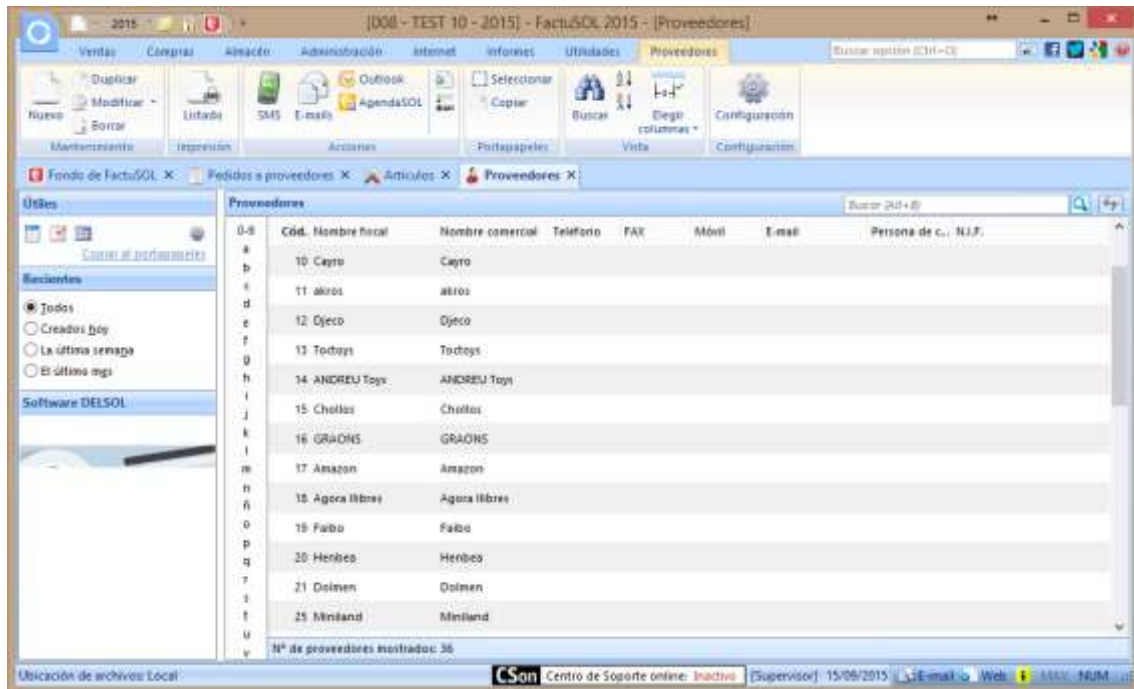
Articles, stock prices

Código	Descripción	C.Barros	Prov.	Fam.	Denominación	Stock	Costo	Tarifa I U	Equivalente	Refe.	Imag
1000	Mesa de luz HENDEA		20	2	Inicia	1,00		230,00			
REF1208	Santaja presentación ...		8	82	MATERIAL MONTESSORI	1,00		24,90			
2242	Gabinete Geométrico		8	82	MATERIAL MONTESSORI	0,00		110,00			
2518	Tarjetas para Gabinete ...		8	82	MATERIAL MONTESSORI	3,00		21,90			
2373	MPI - Triángulos cons...		8	83	Sensorial Montessori	3,00		50,00			
2220	Triángulos constructiv...		8	83	Sensorial Montessori	0,00		92,00			
2239	Caja de mates de col...		8	83	Sensorial Montessori	4,00		52,01			
145	Bloques lógicos en ma...		19	41	Matemáticas	0,00		27,90			
2219	Mapa del mundo con ...		8	89	Geografía Montessori	1,00		43,90			
2207	Torre Rosa PREMIUM +...		8	82	MATERIAL MONTESSORI	8,00		40,00			
2293	Mapa América del Nort...		8	82	MATERIAL MONTESSORI	0,00		28,50			
2104	Mapa de África - Ent...		8	82	MATERIAL MONTESSORI	0,00		20,50			

families

Código	Nombre	Sección	Texto predefinido	Cta. Compras	Cta. Ventas
15		PSS			
81	Aire libre y movimiento	PSS	Aire libre y movimiento		
98	Animales del mundo	PSS	Animales del mundo		
20	Bebés (0-1 año)	PSS	Bebés (0-1 año)		
77	Books by Maria Montessori	PSS	Books by Maria Montessori		
80	Botánica y Zoología	PSS	Botánica y Zoología		
35	Ciencia y medio ambiente	PSS	Ciencia y medio ambiente		
100	Conoce el mundo	PSS	Conoce el mundo		
94	Cuentos para leer juntos	PSS	Cuentos para leer juntos		
27	Cumpleaños	PSS	Cumpleaños		
79	Destrezas y habilidades	PSS	Destrezas y habilidades		
86	Educación, crianza,	PSS	Educación, crianza,		
39	EDUCATIVOS	PSS	EDUCATIVOS		
80	Especios	PSS	Especios		
89	Geografía Montessori	PSS	Geografía Montessori		
85	Infant	PSS	Infant		

providers



6. Import Catalog

This module allows massively upgrade the stock and prices of existing products in the online store and import the new.

6.1. Synchronize prices / stocks of existing products

IMPORTANT: Please read the following sections of this manual before performing any imports:

- 1.4. References in products
- 1.5. Products with combinations in Prestashop
- 3.2. Settings for importing categories, products, prices and stocks

After having the module configured correctly by following the above paragraphs, to launch the execution of importation must:

In Factusol 2016 or earlier:

- Access: Internet> Rise generic data

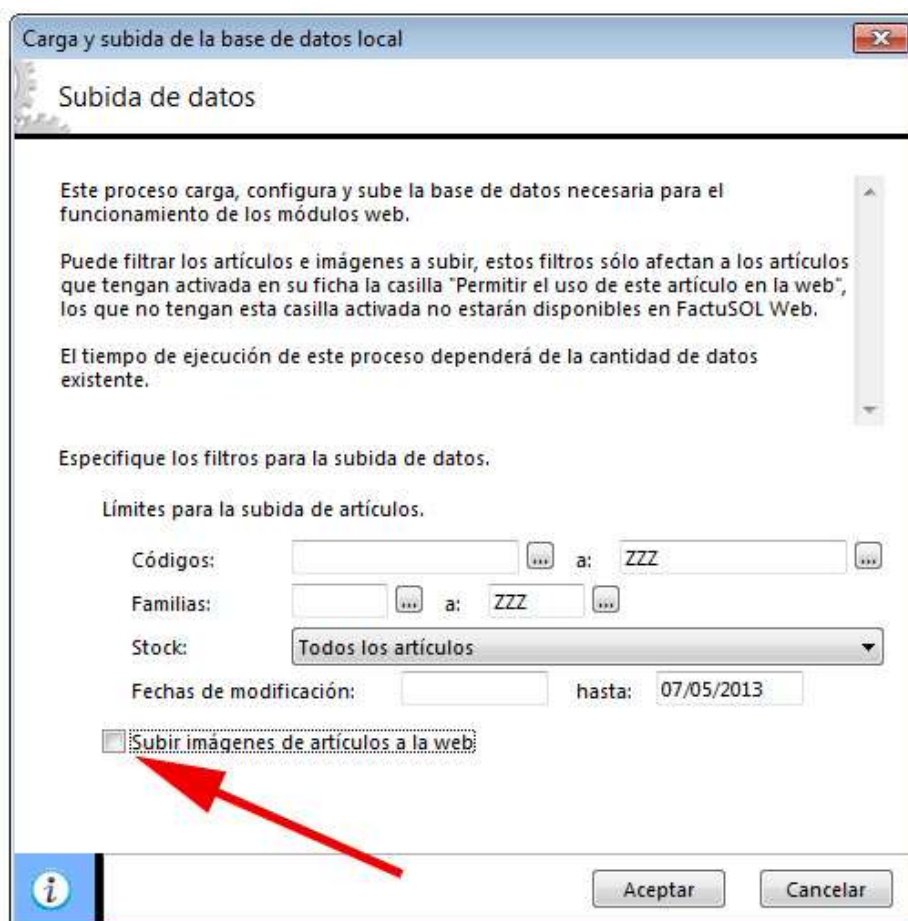


In Factusol 2017 or higher:

- Access Utilities> Factusol Web> Uploading generic data



a new window where we must leave all such fields which are and make sure the field 'Add pictures of items to the Web' if we want to import images of new products in PrestaShop opens.

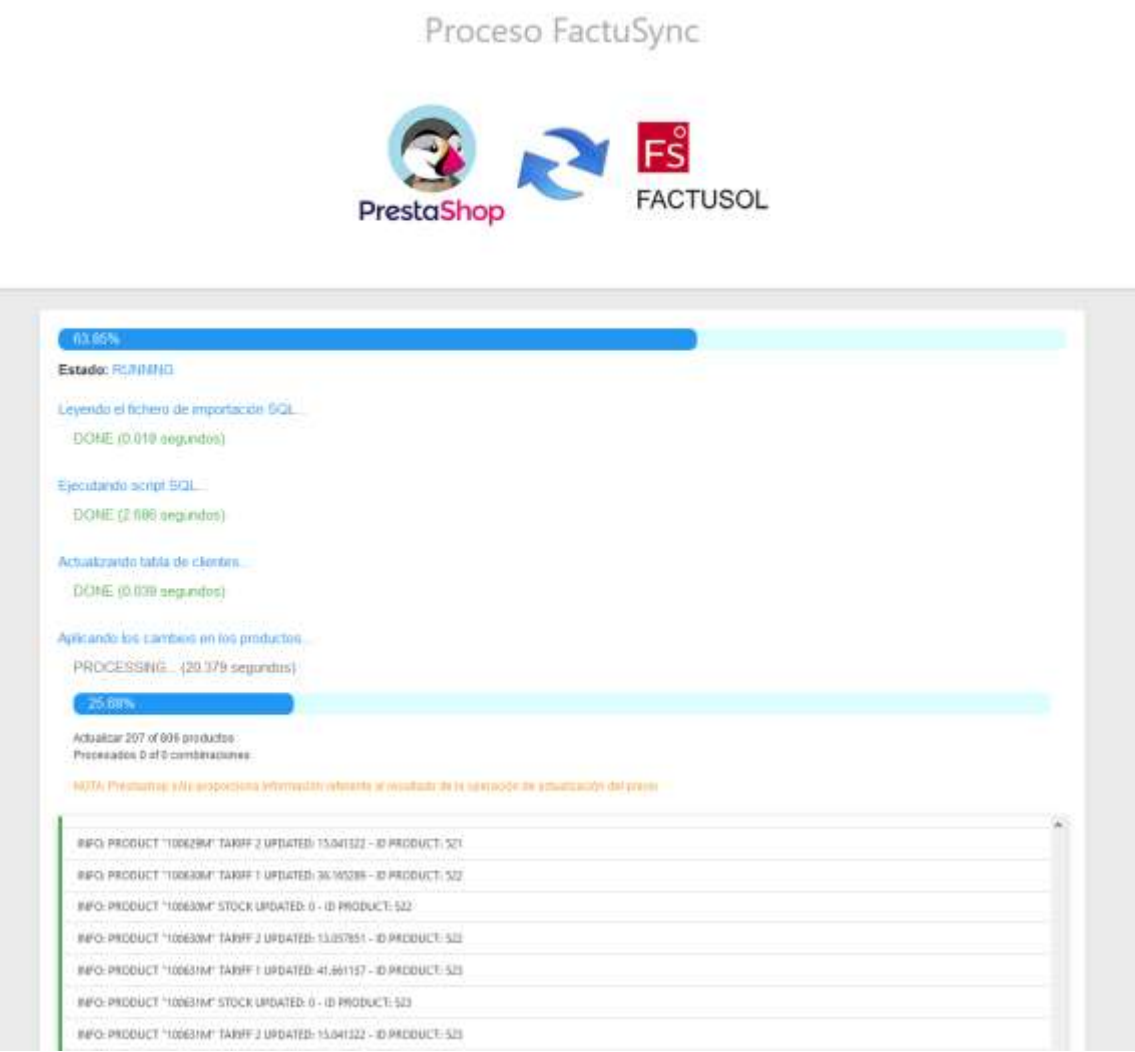


Once we click OK will begin the export process. Once the file is uploaded it will run automatically in our default browser URL Sync responsible for making changes in PrestaShop and generate the CSV file import categories and products in the event of new products to be imported.

IMPORTANT:

This page should not close until the end of the whole process.

The process is conducted in a controlled manner through processes AJAX to avoid possible errors due to the limitations of server, for example, limited execution time (timeout).



At the end of the process the result of all operations performed are displayed.

Proceso FactuSync



100%

Estado: FINISHED

Leyendo el fichero de importación SQL...

DONE: (0.018 segundos)

Ejecutando script SQL...

DONE: (2.888 segundos)

Actualizando tabla de clientes...

DONE: (0.039 segundos)

Aplicando los cambios en los productos...

DONE: (01:481 segundos)

100%

Actualiza 206 de 208 productos

Procesare 0 de 0 combinaciones

NOTA: PrestaShop sólo proporciona información referente al resultado de la selección de actualización del precio

INFO: PRODUCT "102301M" SAFF 1 UPDATED: 37.545455 - ID PRODUCT 1121

INFO: PRODUCT "102301M" STOCK UPDATED: 0 - ID PRODUCT 1121

INFO: PRODUCT "102301M" SAFF 2 UPDATED: 13.553719 - ID PRODUCT 1121

INFO: PRODUCT "102306M" SAFF 1 UPDATED: 37.545455 - ID PRODUCT 1122

INFO: PRODUCT "102306M" STOCK UPDATED: 0 - ID PRODUCT 1122

INFO: PRODUCT "102306M" SAFF 2 UPDATED: 13.553719 - ID PRODUCT 1122

INFO: PRODUCT "102307M" SAFF 1 UPDATED: 37.545455 - ID PRODUCT 1123

INFO: PRODUCT "102307M" STOCK UPDATED: 0 - ID PRODUCT 1123

INFO: PRODUCT "102307M" SAFF 2 UPDATED: 13.553719 - ID PRODUCT 1123

INFO: FINISHED UPDATING PRODUCTS

Comprobando productos nuevos...

DONE: (0.612 segundos)

460 productos o combinaciones encontrados que pueden ser importados.

6 categorías encontradas que pueden ser importadas.

INFO: GIPSA - 61 PSA (PRICE: 1.5700 - STOCK: 13.0000)

INFO: PORTES - PORTES SEUR (PRICE: 7.0000 - STOCK: 20.0000)

INFO: FOUND 6 CATEGORIES

INFO: FOUND "12" CATEGORY

INFO: FOUND "13" CATEGORY

INFO: FOUND "6" CATEGORY

INFO: FOUND "5" CATEGORY

INFO: FOUND "3" CATEGORY

INFO: FOUND "14" CATEGORY

INFO: CSV files have been generated for importing new categories and products, to import them, go to the FactuSOL tab of the Back-Office of your store and follow the instructions.

Se han generado ficheros CSV de importación con nuevas categorías y productos, para importar los ficheros accede a la opción de nuevo FactuSOL PRE > Importar catálogo y sigue las instrucciones del manual

Borrando tablas temporales...

DONE: (0.101 segundos)

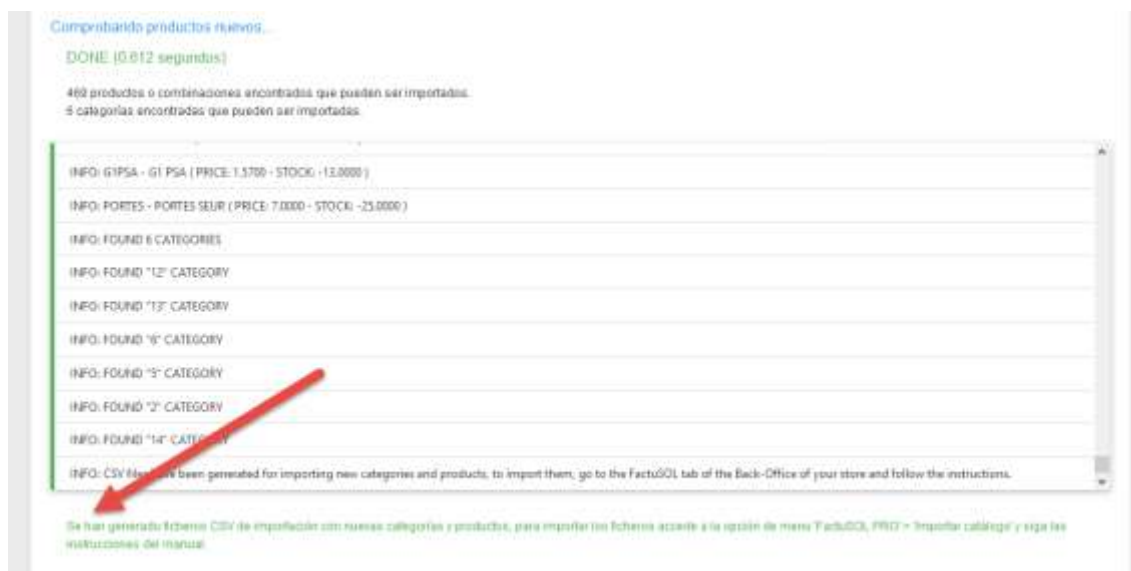
Proceso finalizado

6.2. Import new categories and products

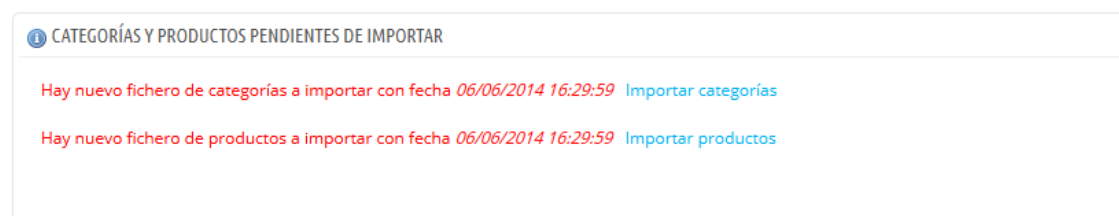
Remember to import new products to Prestashop Factusol must enable the generation of CSV files for new products (see section 3.2).

6.2.1. Importing CSV files generated

If you have enabled the option to generate the CSV files detected new products and categories will inform the module at the end of the synchronization process if you have created CSV files with new products and categories imported.



To import must access the tab Factusol PRO> Import module catalog and see that here also report the existence of new categories or products to be imported and the date of his generation:



To import we click on the button 'Import categories' and / or 'Import goods'.

In case we have unmapped categories we can relate the categories of Prestashop with FactuSQL by clicking on "Mapping Categories".



Once we click on "Mapping Categories" we can see if our category of factuSOL coincides with Prestashop by clicking on "Attempt to automate".

LISTA DE CATEGORÍAS MAPEADAS

Categoría	Categoría por defecto Prestashop	Numero total de categorías mapeadas	
SECCION1 FAMILIA1	—	0	Modificar
SECCION1 FAMILIA0	—	0	Modificar
SECCION2 FAMILIA3	—	0	Modificar

[Intentar automatizar](#)

If we want we can also map them by clicking on "modify" and if this is a category that we are not going to map, we can click on "Delete".

ASIGNAR CATEGORÍA PREDETERMINADA Y OTRAS CATEGORÍAS PARA: SECCION1|FAMILIA1


Categorías mapeadas: [Categorías](#) [Collapse All](#) [Expand All](#) ☒ Check All ☐ Uncheck All


- Raiz
 - ☐ Inicio
 - ☐ Clothes
 - ☐ Accesorios
 - ☐ Art
 - ☐ FAMILIA4
 - ☐ SECCION2
 - ☐ SECCION2
 - ☒ FAMILIA0

* Categoría predeterminada:


[Cancelar](#) [Guardar](#)



Once we do the mapping and click on "Import products / Categories" we will show the import screen of Prestashop with all the data configured so we only have to click on the import button:

 VER SUS DATOS


 Por favor, enlace cada columna de su archivo CSV de origen a una de las columnas de destino.

Cargue su configuración de recursos

FactuSOL Categorigas 

 Cargar  Eliminar







Guarde su configuración de recursos



 Guardar


Líneas a saltar


1


Este número indica cuantas de las primeras líneas de tu archivo CSV deben ser omitidas cuando se importen los datos. Por ejemplo, indica 1 si la primera fila de tu archivo contiene cabeceras.

ID 	Activo (0/1) 	Nombre* 	Categoría pad 	Categoría raíz 	Descripción 
ID	Active (0/1)	Name *	Parent category	Root category (0/1)	Description
ignore	1	Fútbol	Home	0	Fútbol
ignore	1	Camisetas	Fútbol	0	Camisetas

 Cancelar

Hacer click en 'Importar datos CSV' 

 Importar datos CSV

Example Import Categories

VER SUS DATOS

Por favor, enlace cada columna de su archivo CSV de origen a una de las columnas de destino.

Cargue su configuración de recursos

FactuSQL Categorigas

Cargar Eliminar

Guarde su configuración de recursos

Guardar

Líneas a saltar

1

Este número indica cuantas de las primeras líneas de tu archivo CSV deben ser omitidas cuando se importen los datos. Por ejemplo, indica 1 si la primera fila de tu archivo contiene cabeceras.

ID	Activo (0/1)	Nombre*	Categorías (x,y,z...	Precio sin IVA	ID regla de
ID	Active (0/1)	Name *	Categories (x,y,z,...)	Price tax excluded or Price tax included	Tax rules ID
ignore	1	Camiseta FC Barcelona Uni-talla Molón	Camisetas	75.0000	1

Cancelar

Clic en Importar datos CSV

Importar datos CSV

IMPORTANT:

For a successful import of data is necessary to import the categories or mapping first and then the products.

Remember to complete the entire import process because once you have clicked on the 'Import Categories' or 'Import Product' tab of Factusol button PRO disappears the option to import up a synchronization (generic data upload) to re done from the Factusol.

FOR FURTHER SAFETY ALL PRODUCTS WILL BE CREDITED IN 'DEACTIVATED' STATE, YOU SHOULD ACTIVATE THEM MANUALLY FROM THE PRODUCT LIST

Example: Imported

Factusol product:

Camiseta FC Barcelona Uni-talla Molón - Artículo

Artículo

Números de serie / lote

Guardar y nuevo

Guardar y seguir

Eliminar

Mantenimiento

General

Proveedores

Internet

Mostrar

Técnica

Condiciones

Imagen

Imagen

Estadísticas

Entradas y salidas

Consultas

Utilidades

Utilidades

Ficha

Código: REP001

Código de barras:

Generar

Códigos de barras adicionales

Familia: 001

Buscar

 Camisetas

Descripción general: Camiseta FC Barcelona Uni-talla Molón

Equivalente: Código corto: 31701 Tipo de IVA: 1.- (16%)

Proveedor habitual: 1

Buscar

 Referencia:

Fabricante: 0

Buscar

Preios

Observaciones

Precio de costo: 0,00 Descuentos: 0,00 0,00 0,00

Tarifa	Nombre	P.Costo	Margen	Mar. Real	P.Venta	Precio I/I
1	Tarifa 1	0,00	3,0000	100,0000	75,00	87,00

Información de stock

Almacén: [GEN] GENERAL

Stock actual: 22,00 Stock mínimo: 0,00

Stock disponible: 22,00 Stock máximo: 0,00

Consolidar stock

Modificar

Imported PrestaShop:

PS 1606 Acceso rápido Mi tienda Carlos Moyano

PRODUCTOS

Productos

✓ El/Los elemento(s) seleccionado(s) ha(n) sido eliminado(s) exitosamente

Artículos disponibles: 90%



Margen bruto medio: 0%

30% de tus ventas en 30 DÍAS: 0% de su Catálogo

Productos deshabilitados: 0

☐ Filtrar por categoría

PRODUCTOS 1

ID	Foto	Nombre	Referencia	Categoría	Precio base	Precio final	Cantidad	Estado
26		Camiseta FC Barcelona Uni-talla Molón	REF0001	Camisetas	75,00 €	90,75 €	22	 Modificar

PrestaShop™ 1.6.0.6 Twitter Facebook Google+ [Contacto](#) / [Bug Tracker](#) / [Foro](#) / [Addons](#) ([Inquirir addons.prestashop.com](#)) / [Entrenamiento](#)

Camiseta FC Barcelona Uni-talla Molón

Modelo REF0001

Condición Nuevo

Camiseta FC Barcelona Uni-talla Molón

22 artículos En stock

[Tweet](#) [Share](#) [Google+](#) [Pinterest](#)

90,75 €

Cantidad: [-](#) [+](#)

[Añadir al carrito](#)

[Añadir a mi wishlist](#)

7. Import bills

This module allows you to import PDF invoices generated in Factusol for the customer to download. To access the Import menu we access the 'Factusol PRO> Import Invoices' tab.

We have 2 import options 'Automatic' or 'Manual'.

7.1. Automatic file import bill

Auto Import allows you to upload several files simultaneously invoice so that the module is responsible for detecting and associate each invoice to the corresponding order.

IMPORTANT:

For the module to correctly detect the order associated with the invoice need 2 requirements:

- 1) Have activated the option 'bills Consultation' in Factusol! (See section 3.3.1. Factusol Internet Web Configuration)
- 2) Having previously made a 'generic Uploading Data' from Factusol
- 3) The name of the files for invoices has one of the 2 formats which allows Factusol:
 - a. **Format 1:** COMPANY NAME bill SL (8-000001) .pdf
 - b. **Format 2:** Invoice-8-000001.pdf*Where "8" and Series = "000001" = Code bill*

Description of fields:

- **Overwrite existing:** Enabling this option will overwrite the module matches any previously uploaded file invoice. If the module is not activated will import only the new bills.
- **Send e-mails:** Enabling this option the module will send an email to the customer with your invoice associated order.
- **Select the PDF invoices to import:** Selects files generated invoices in Factusol to be imported.

7.2. Manual import bill

It is possible that the module can not automatically detect the relationship of each file with your order. However, you can manually upload and attach an invoice to a request from the 'Manual import bills' section.

IMPORTACIÓN MANUAL DE FACTURAS:

Id pedido:

Selecciona la factura PDF a importar

Description of fields:

- **Id order:** Enter the ID of the order to which associated the bill.
- **Select the PDF invoice to import:** You select the invoice file to import.

You can also import bill an order from the own tab order (see apartado 7.4)

7.3. List of imported invoices

In the 'List of invoices imported' section you can view, download, email or eliminate all imported so far invoices.

LISTADO DE FACTURAS IMPORTADAS

	Serie Factusol	Código factura Factusol	Id pedido	Acceso al cliente	Correo enviado	Fecha envío correo	Fecha importación	
<input type="checkbox"/>	8	2	6	✓	No	0000-00-00 00:00:00	29/03/2017 11:05:07	<input type="button" value="Descargar PDF"/>
<input type="checkbox"/>	8	5	7	✓	Si	27/03/2017 13:46:25	27/03/2017 13:29:51	<input type="button" value="Descargar PDF"/>

Acciones Agrupadas

Description of the table:

- **Factusol series:** It corresponds to the serial number of the invoice in Factusol
- **Factusol invoice code:** It corresponds to the invoice number in Factusol
- **Id order:** It corresponds to the order ID associated with the bill in Prestashop
- **Client Access:** It indicates whether the client can download the invoice or not
- **Email sent:** It indicates whether the email has been sent to the customer or not
- **Mail delivery date:** Reports the date of the last shipment of customer invoice
- **Import date:** Reports the date on which the import of the bill was made

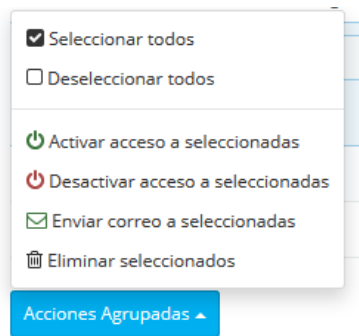
7

1

permitted actions:

- **Download pdf:** It helps download the invoice. You can also download the invoice of an order from the own tab order (see apartado 7.4).
- **Send email:** Send the invoice by email to customer order.

- **Remove:** Clear your bill. You can also download the invoice of an order from the own tab order (see apartado 7.4).



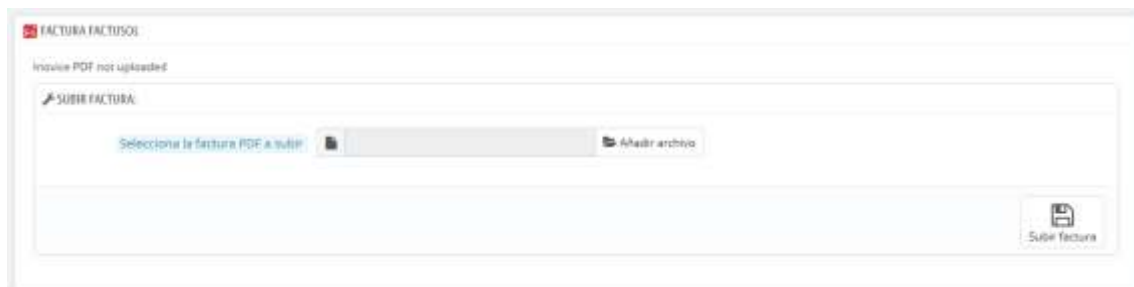
permitted mass actions:

- **Enable access to selected:** Enables access to download invoice customers for the selected invoices.
- **Disable access to selected:** Disables access to download invoice customers for the selected invoices.
- **Send mail to selected:** It allows you to send an email to the customer with the bill for the selected invoices.
- **Remove Selected:** Deletes the selected invoices.

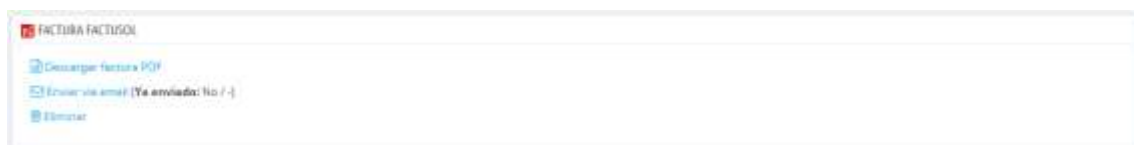
7.4. Invoice management tab order

We can also import, download, email or delete an invoice associated with a request from the own tab order from the 'Invoice Factusol' section find within the tab.

Order without an invoice associated:



Order with associated invoice:



7.5. Download invoice by customer

So that the customer can download the invoice must access the 'Order history' from section 'My Account' and display the 'detail' of an order.

Historial de pedidos

Lista de pedidos desde la creación de su cuenta.

Referencia del pedido	Fecha	Precio total	Pago	Estado	Factura
OEAFFFQWM	15/02/2017	32,66 €	Pago por transferencia bancaria	Pago por transferencia bancaria pendiente	 Detalles Pedir de nuevo
NRKSVHJH	15/02/2017	179,70 €	Pago por transferencia bancaria	Pago aceptado	Detalles Pedir de nuevo

[Volver a su cuenta](#) [Inicio](#)

In the detail of a request from front-office customer you will find a section to download the invoice.

If the invoice has not yet been uploaded or has not been activated customer permission message appears instead of the download link:

Transportista PS 1.7.0.4

Método de pago Pago por transferencia bancaria

SIGA SU PEDIDO PASO A PASO

Fecha	Estado
15/02/2017	Pago por transferencia bancaria pendiente


Dirección de envío Mi Dirección

Test dos asdfasdf
Tirso de molina, 36
08759 Cornellà de Llobregat
España

Dirección de factura Mi Dirección

Test dos asdfasdf
Tirso de molina, 38
08759 Cornellà de Llobregat
España

Factura de este pedido

Factura no disponible todavía 

Once uploaded the bill, the customer can download it:

Detalles del pedido

Referencia de pedido NRK3JVHJK - efectuado el 15/02/2017

Pedir de nuevo

Transportista PS 1.7.0.4

Método de pago Pago por transferencia bancaria

SIGA SU PEDIDO PASO A PASO

Fecha

Estado

15/02/2017

Pago aceptado

15/02/2017

Pago por transferencia bancaria pendiente

Dirección de envío Mi Dirección

Test dos asdfasdf
Tirso de molina, 36
08759 Cornellà de Llobregat
España

Dirección de factura Mi Dirección

Test dos asdfasdf
Tirso de molina, 36
08759 Cornellà de Llobregat
España

Factura de este pedido

Descargar la factura en formato PDF

Producto	Cantidad	Precio unitario	Precio total
Camiseta efecto desteñido de manga corta - Size : S, Color : Naranja Referencia: demo_1	1	148,51 €	148,51 €
		Subtotal	179,70 €
		Gastos de envío y de preparación	¡Gratis!
		Total	179,70 €

8. ANNEX I: Avoid duplicate customer accounts Factusol

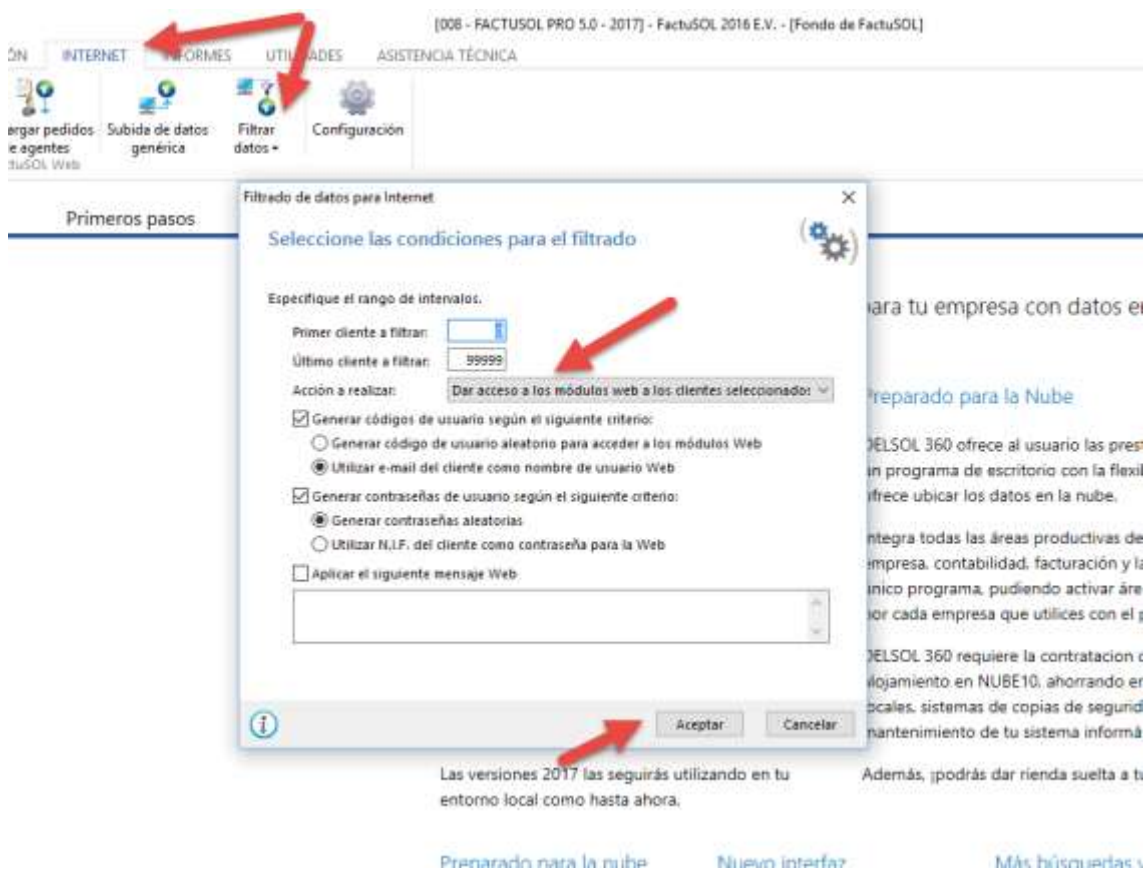
By downloading customers and orders from Prestashop to Factusol, Factusol does not check if there is already a customer's account and 2 things can happen:

- 1) If the customer ID is the file that matches the client of another client created manually in Factusol, the latter data will be overwritten by the downloaded file.
- 2) If the ID does not match any other client Factusol, Factusol create new customer record. If there is a record of the customer we will find 2 records for the same customer.

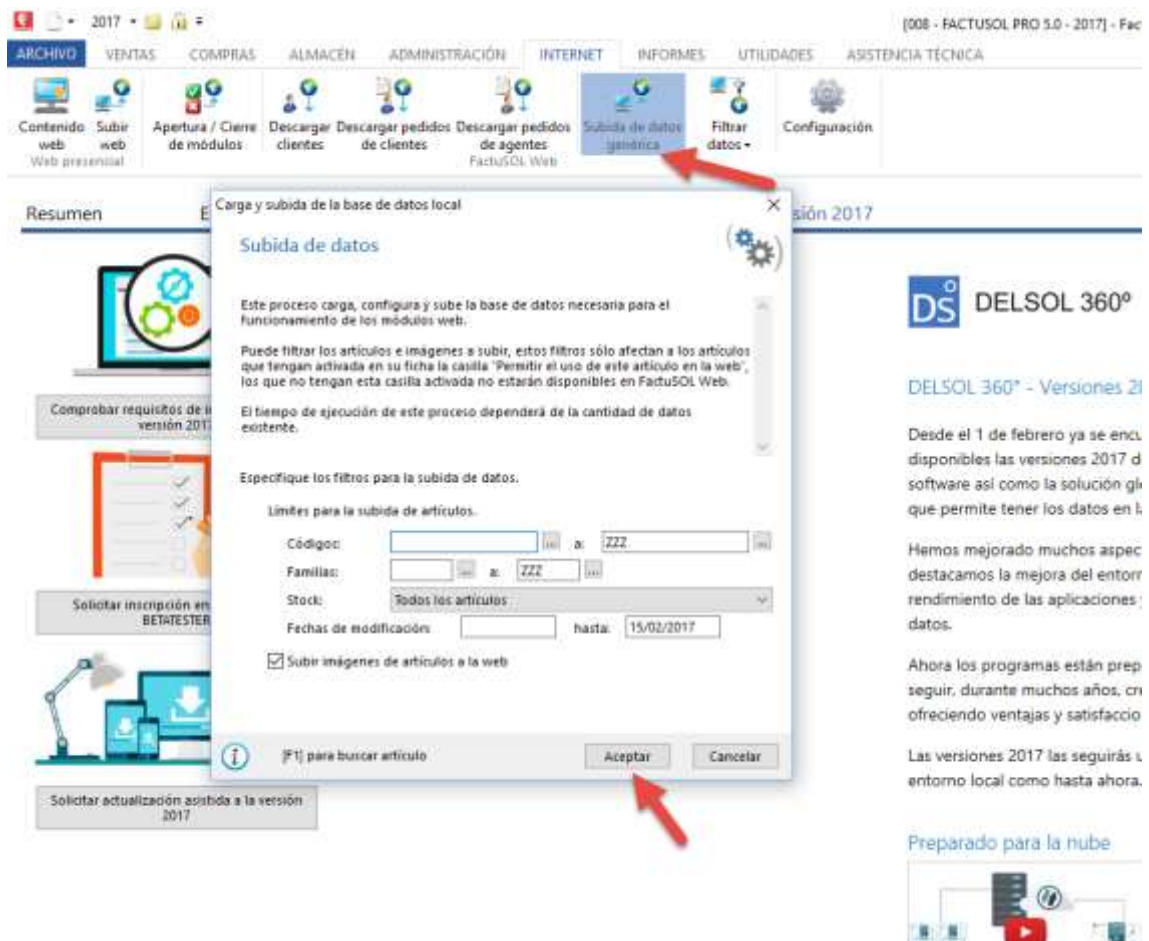
To avoid these problems, we added to the module system to detect customers created in Factusol, but it is necessary at least 1 'Generic Uploading Data' before downloading customer records Prestashop to Factusol.

The steps to follow are those:

- 1) Access Factusol and activate permission to raise customer data to the web, to make massively must access the 'Internet' tab - 'Data Filter' - 'Customers' and activate the action' Provide access to modules web to selected customers':



- 2) Launch a 'generic Uploading Data':



With this, the module will customer information prebuilt and will not download duplicates from previous customers to module installation data.

9. ANNEX II: Fast mode

This new mode allows you to update prices and stocks thousands of products in few seconds. The difference with the normal mode is that this mode written directly to database without going through the library Prestashop, which increases processing speed up to 50 times.

This mode is intended for large product catalogs with more than 5,000 references.

To activate the 'Fast Mode' to access the menu 'Factusol - Settings - Configuration Import prices and stocks' module:

CONFIGURACIÓN PARA IMPORTACIÓN DE PRECIOS Y STOCKS

Actualizar PRECIOS: ☒ SI ☐ NO

Actualizar STOCKS: ☒ SI ☐ NO

Precios en FactuSOL con IVA incluído: ☐ SI ☒ NO

Generar CSV de importación: ☐ SI ☒ NO

IVA Estandar: 21.000


IVA Reducido: 10.000

IVA Superreducido: 4.000


Tarifa principal: 1
(Obligatorio)

Id tarifa para "Tarifa 2": 4
(Opcional) Sólo para multitarifa

Id tarifa para "Tarifa 3": 5
(Opcional) Sólo para multitarifa

 sincronización: ☒ SI ☐ NO

Modo rápido: ☒ SI ☐ NO
(Opcional) La opción de "Modo rápido" escribe directamente los nuevos precios y stocks en base datos por lo que es mucho más rápido. No obstante, tenga en cuenta que este modo no permite obtener información detallada de los productos actualizados.

 Guardar opciones de importación

Once activated, to make a 'Rise generic data' from Factusol and run the synchronization URL will see a report that the rapid mode is activated message. In return thus you can not obtain detailed product information and updated combinations:

Proceso FactuSync



MODO RÁPIDO ACTIVADO

100%

Estado: FINISHED

Leyendo el fichero de importación SQL...

DONE (0.011 segundos)

Ejecutando script SQL...

DONE (3.262 segundos)

Actualizando tabla de clientes...

DONE (0.052 segundos)

Aplicando los cambios en los productos...

DONE (13.003 segundos)

100%

ATENCIÓN: Modo rápido activado: Este modo escribe directamente en base de datos por lo que no es posible obtener información detallada de los productos actualizados

INFO: ACTUALIZACIÓN DE PRODUCTOS INICIADA.
INFO: ACTUALIZACIÓN DE PRECIOS
INFO: Actualizado TARIFA PRINCIPAL (ID TARIFA: 3) en 4662 productos
INFO: Actualizado TARIFA PRINCIPAL (ID TARIFA: 3) en 1 combinaciones*
INFO: Actualizado TARIFA SECUNDARIA (ID TARIFA: 4) en 4662 productos
INFO: Actualizado TARIFA SECUNDARIA (ID TARIFA: 4) en 1 combinaciones
INFO: ACTUALIZACIÓN DE STOCKS
INFO: Actualizado STOCK en 4662 productos
INFO: Actualizado STOCK en 0 combinaciones*
INFO: ACTUALIZACIÓN DE PRODUCTOS FINALIZADA

* Para las combinaciones solamente se actualiza si la combinación tiene variación en el precio o stock, si el precio o stock no ha variado no se actualiza

Comprobando productos nuevos...

DONE (4.557 segundos)

47 productos o combinaciones encontrados que pueden ser importados.
11 categorías encontradas que pueden ser importadas.

INFO: FOUND "CKP" CATEGORY
INFO: FOUND "ACT" CATEGORY
INFO: FOUND "CF" CATEGORY
INFO: FOUND "PUA" CATEGORY
INFO: FOUND "CIB" CATEGORY
INFO: FOUND "SES" CATEGORY
INFO: FOUND "ESM" CATEGORY
INFO: FOUND "SES" CATEGORY
INFO: FOUND "SPC" CATEGORY
INFO: CSV IMPORT GENERATION IS DISABLED. PLEASE ENABLE IT AT MODULE CONFIGURATION.

Borrando tablas temporales...

DONE (0.177 segundos)

Proceso finalizado

Module developed by OBSolutions



Web: http://addons.prestashop.com/en/65_obs-solutions